



# KID CITY

## Approach and impact

What it is and how it helps  
the city of Maplewood

# KID CITY is a public art initiative.

KID CITY works with city departments, community organizations, and schools to deliver participatory arts events as well as youth and family art programs.



## What does KID CITY do?

### Family-friendly community engagement

KID CITY uses the arts to bring community residents together for fun, participatory events. KID CITY artists work with community partners to plan and deliver the annual Maplewood Laugh-In, a community arts event hosted by the Maplewood Parks and Recreation Department. Additionally, the KID CITY mobile team engages residents at various community events using arts strategies, such as puppetry, clowning, and story-telling. Strategies like this are used at 10-20 community events each year.

### Youth and family art programs

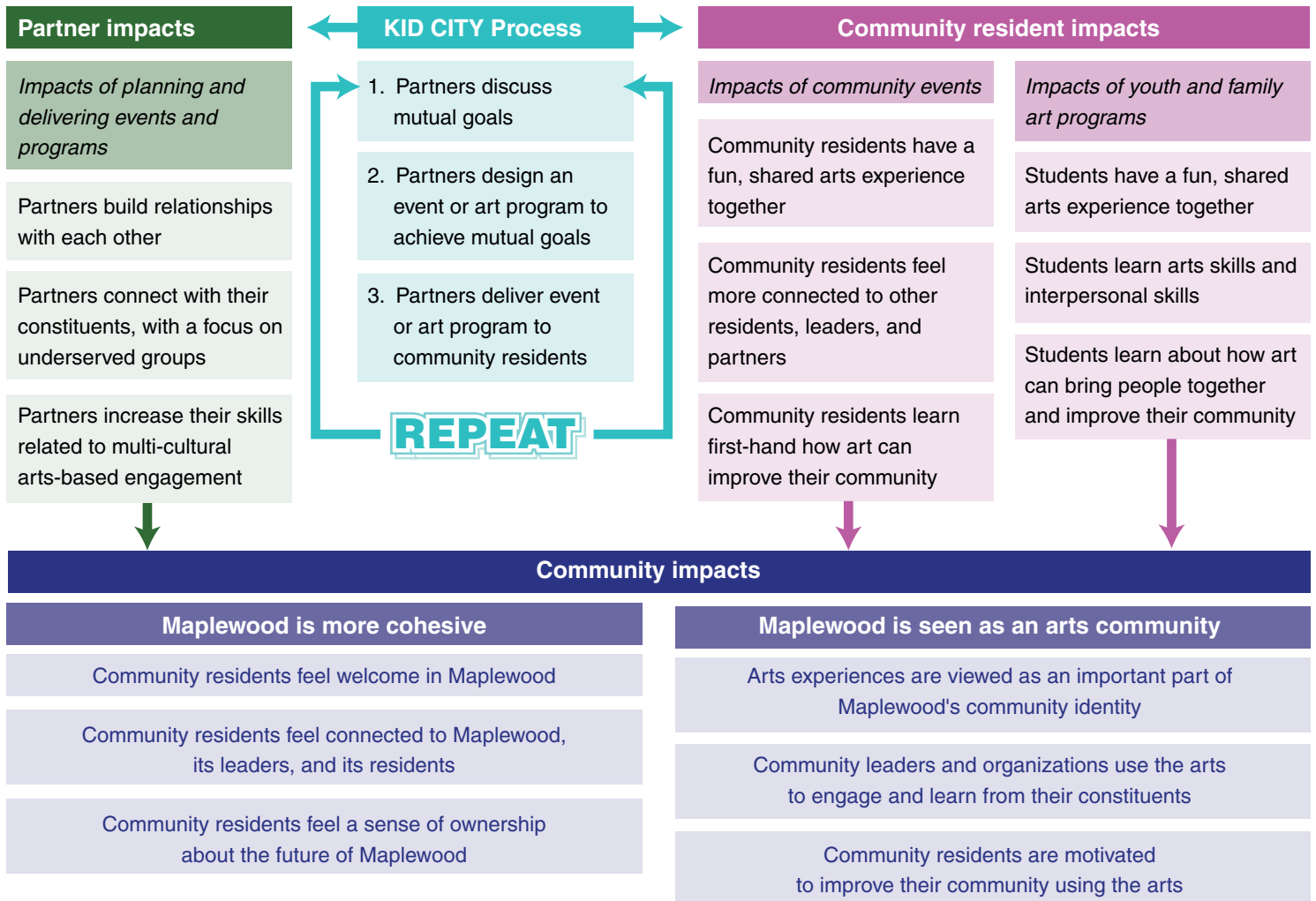
KID CITY youth and family art programs teach how arts skills like comedy, videography, theater, and puppetry can be used to engage neighbors and leaders to improve communities. Each KID CITY youth and family art program is planned and delivered in collaboration with a community partner, such as a school or social services organization. There are 5-10 different types of programs throughout the year.

## Goals

1. **Engage community residents** in city revitalization through the creativity of children
2. **Spark connections** across the diverse populations of Maplewood
3. **Empower children** to become future leaders in Maplewood



# What is KID CITY's impact?



## What is KID CITY's view on community engagement?

KID CITY operates through a lens of diversity and access. The KID CITY artist team is comprised of nine artists who are diverse in terms of age, culture, and arts discipline. Likewise, the KID CITY advisory committee is also diverse in terms of age, culture, and professional background. The diversity of KID CITY's two governing bodies – the artist team and the advisory committee – allows KID CITY to provide Maplewood's diverse residents with access to meaningful civic participation through the arts. KID CITY's events and arts programs are intended to be multi-cultural, with an intention of engaging underserved groups in Maplewood. This is accomplished through proactively examining events and arts programs from a cross-cultural viewpoint as well as building relationships with organizations that serve and are led by underserved groups.





CITY OF MAPLEWOOD  
**KID CITY**



metro  
regional  
arts  
council

F. R. BIGELOW FOUNDATION

For more information about *KID CITY: Approach and Impact*, please contact Ryan Evans at 651-280-2677 or visit us online at [www.wilderresearch.org](http://www.wilderresearch.org).

**Wilder  
Research**  
Information. Insight. Impact.

451 Lexington Parkway North  
Saint Paul, Minnesota 55104  
651-280-2700