

Wilder Center MEETING SPACE INFORMATION



Audio/Visual Capabilities By Space

Wilder Center Auditorium	FULL	Projector, A/V screen, hybrid video-conference system, DVD/VCR, microphone, conference phone, ceiling speakers
Amherst H. Wilder Auditorium	A	Projector, A/V screen, hybrid video-conference system, DVD/VCR, microphone, conference phone, ceiling speakers
Fanny Spencer Wilder Auditorium	B	Projector, A/V screen, DVD/VCR, microphone, conference phone, ceiling speakers
Cornelia Day Wilder Auditorium	C	Projector, A/V screen, DVD, microphone, conference phone, ceiling speakers
Victor Watkins Auditorium	D	Projector, A/V screen, DVD, microphone, conference phone, ceiling speakers
Wilder Center Lobby	Lobby	None
Midway Room	2310	Flatscreen Monitor
West Side Room	2320	None
Merriam Park Room	2410	Projector, A/V screen, DVD
Como Room	2420	None
Frogtown Room	2510	A/V screen, projector, hybrid video-conference system, DVD, audio ceiling speakers
Summit-University Room	2610	A/V screen, projector, hybrid video-conference system, DVD, audio ceiling speakers
North End Room	2520	A/V screen, projector
Wilder Center Backyard		Overhead speakers used in conjunction with Auditorium A

Meeting Space Rental: 651-280-2402 • meet@wilder.org
451 Lexington Parkway North, Saint Paul, MN 55104 • wilder.org/meet



Wilder Center Meeting Space Rental Rates

Room Charges *(billed hourly, 4 hour minimum for Auditoriums)*

Room	For-Profit Rate	Nonprofit/ Government Rate
Wilder Center Auditorium (Full)	\$450.00/hr	\$275.00/hr
Amherst H. Wilder Auditorium (A)	\$200.00	\$110.00
Fanny Spencer Wilder Auditorium (B)	\$175.00	\$90.00
Cornelia Day Wilder Auditorium (C)	\$55.00	\$40.00
Victor Watkins Auditorium (D)	\$55.00	\$40.00
Cornelia Day AND Watkins Auditoriums (C & D)	\$175.00	\$90.00
Rondo Dining Room	\$75.00	\$75.00
Wilder Center Lobby	\$200.00	\$110.00
Rooms 2310, 2320, 2410, 2420, 2520	\$50.00	\$ Free of charge (1x /month) \$35/hour after 1 time
Frogtown Room 2510	\$75.00	\$ Free of charge (1x /month) \$35/hour after 1 time
Summit-University Room 2610	\$100.00	\$ Free of charge (1x /month) \$35/hour after 1 time
Wilder Center Backyard	\$220	\$220

**Other charges may apply*

Meeting Space Rental: 651-280-2402 • meet@wilder.org
451 Lexington Parkway North, Saint Paul, MN 55104 • wilder.org/meet



Wilder Center Meeting Space Information

Helpful Hints

- The building hours are 7:30 a.m.–8:30 p.m. If the event contact, event staff or caterers wish to gain access to the building prior to 7:30 a.m. or after 8:30 p.m., please arrange with the Event Manager prior to your event.
- All 2nd, 3rd and 4th floor meeting rooms can be reconfigured by the meeting owner, but must be set back to the default room set-up for the next group.
- Deliveries must enter and exit using the North side loading dock when transporting items that require a cart or cannot be hand carried.
- White board/flip chart easels and markers are provided upon request, but flip chart paper is not.
- Wilder Center does not provide linens for rounds or other tables.
- Feel free to go through any licensed caterer you would like. Please contact Event Manager for a list of preferred vendors.
- The Wilder Center dining room must be cleared of all event attendees between 11:00 a.m.–1:00 p.m.
- If your presentation requires anything beyond a power point and microphone, please set up a time with the Event Manager for an A/V run-through prior to your event.

Wireless Internet Connectivity

The 'AHWilder-Public-Wireless' network is visible to all wireless devices and is specifically provided for visitors to have limited and controlled internet access. (Note: This network requires a temporary username/password combination for internet access as well as acceptance of the "Appropriate Use" agreement as described on the log-on web page.)

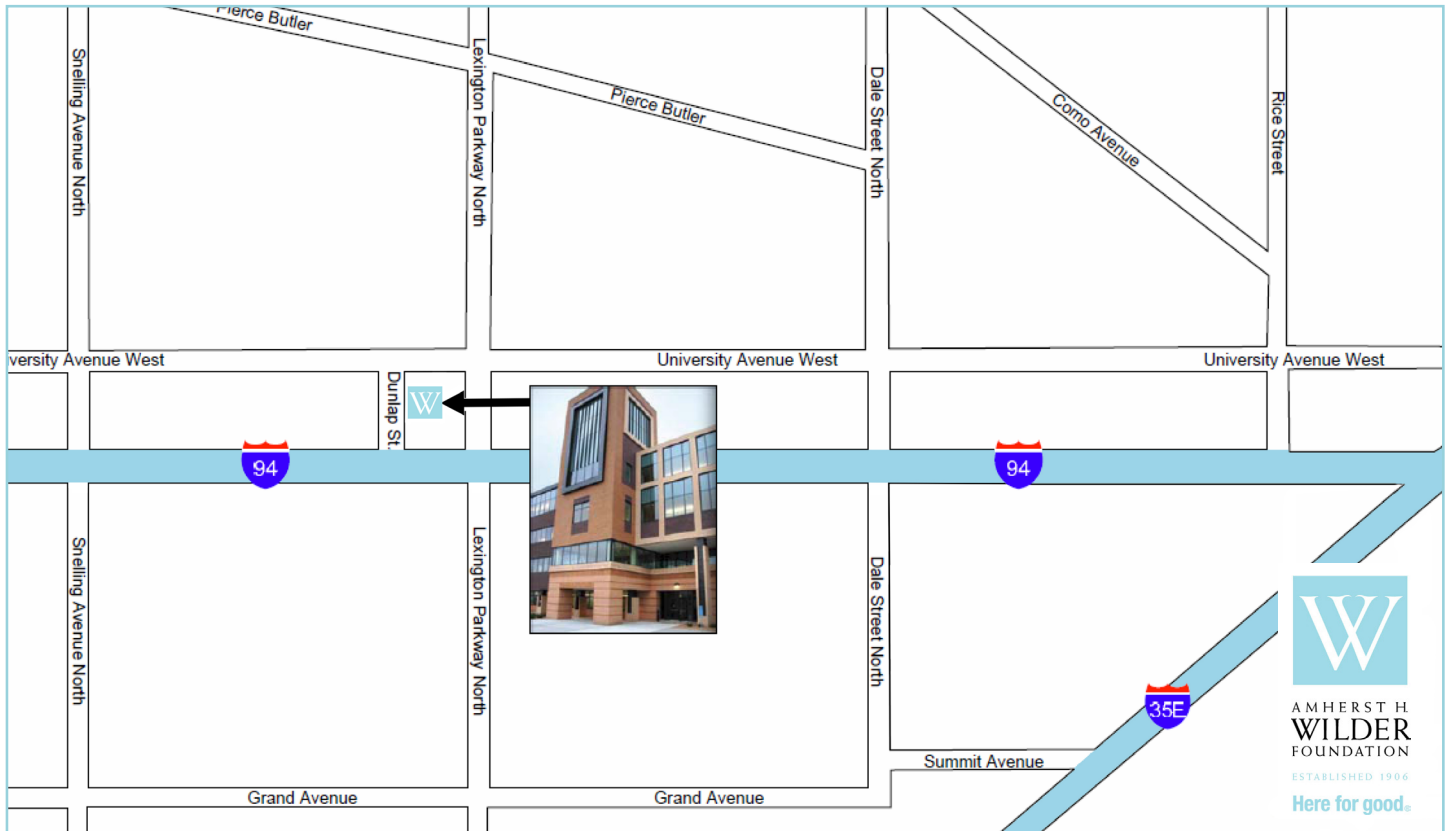
- Select 'AHWilder-Public-Wireless' network on your device.
- Open a Browser (Internet Explorer works best)
- A website security certificate might show up, if so, select "Continue to this website"
- On the Log in screen, select "Don't have an account"
- Enter your first and last name, then click "Submit"
- Successfully Created Guest Account...click "OK"
- Click to accept the terms and conditions

Meeting Space Rental: 651-280-2402 • meet@wilder.org
451 Lexington Parkway North, Saint Paul, MN 55104 • wilder.org/meet



Wilder Center Location & Directions

Wilder Center is located on the corner of Lexington Parkway and University Avenue in Saint Paul.



FROM THE WEST (MINNEAPOLIS):

Take 94E and exit at Lexington Parkway. Take a left onto Lexington Parkway. Wilder Center will be on your left. Turn left just before Huntington Bank. At the stop sign go straight, then take a left into the parking ramp.

FROM THE EAST (WOODBURY):

Take 94W and exit at Lexington Parkway. Take a right onto Lexington Parkway. Wilder Center will be on your left. Turn left just before Huntington Bank. At the stop sign go straight, then take a left into the parking ramp.

FROM THE NORTH (ROSEVILLE):

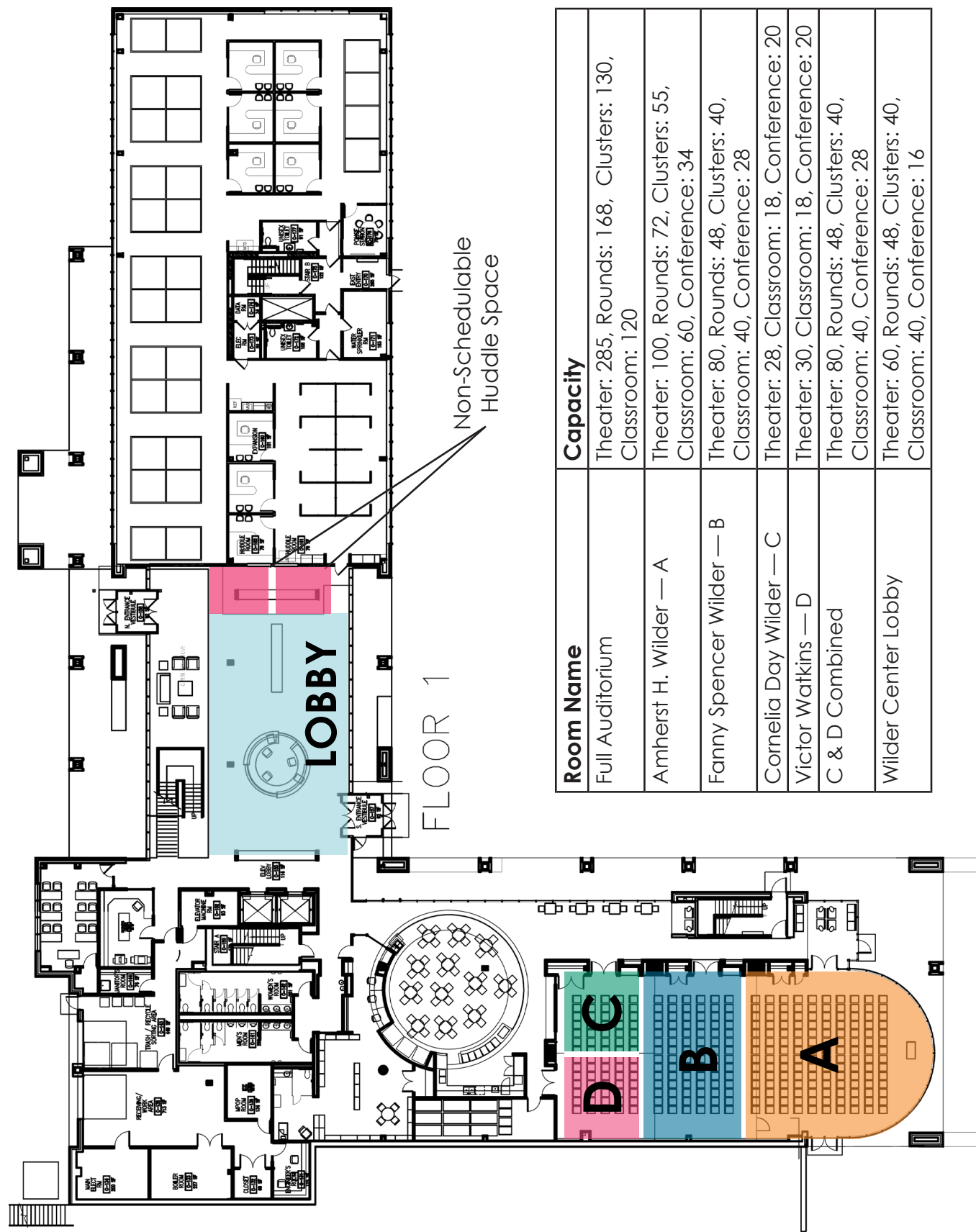
Take 35E South and merge onto 94W. Exit at Lexington Parkway and take a right. Wilder Center will be on your left side. Turn left just before Huntington Bank. At the stop sign go straight, then take a left into the parking ramp.

FROM THE SOUTH (WEST ST. PAUL):

Take Hwy 52 North and merge onto 94W. Exit at Lexington Parkway and take a right. Wilder Center will be on your left side. Turn left just before Huntington Bank. At the stop sign go straight, then take a left into the parking ramp.

Wilder Center Meeting Space Information

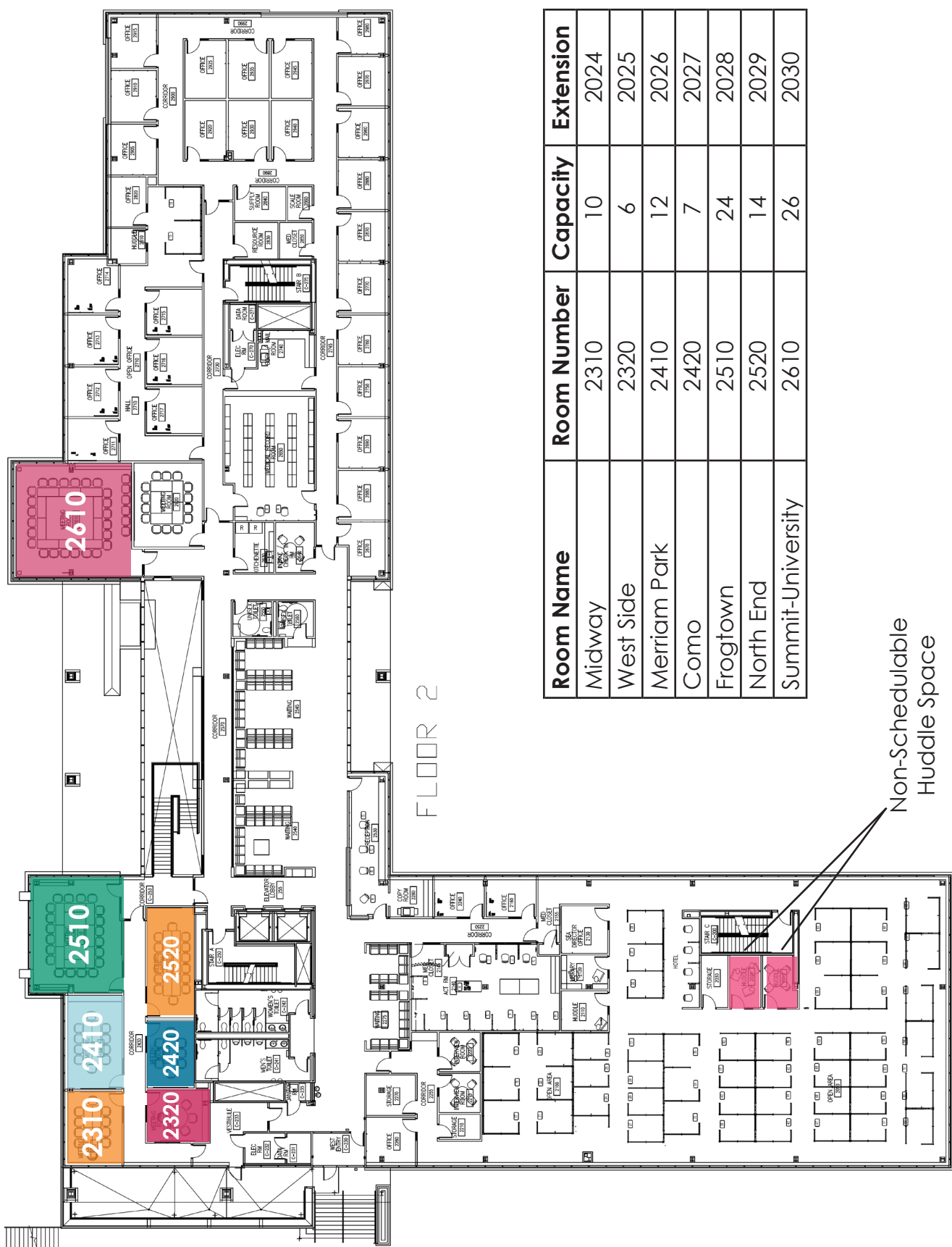
Floor 1



Room Name	Capacity
Full Auditorium	Theater: 285, Rounds: 168, Clusters: 130, Classroom: 120
Amherst H. Wilder — A	Theater: 100, Rounds: 72, Clusters: 55, Classroom: 60, Conference: 34
Fanny Spencer Wilder — B	Theater: 80, Rounds: 48, Clusters: 40, Classroom: 40, Conference: 28
Cornelia Day Wilder — C	Theater: 28, Classroom: 18, Conference: 20
Victor Watkins — D	Theater: 30, Classroom: 18, Conference: 20
C & D Combined	Theater: 80, Rounds: 48, Clusters: 40, Classroom: 40, Conference: 28
Wilder Center Lobby	Theater: 60, Rounds: 48, Clusters: 40, Classroom: 40, Conference: 16

Wilder Center Meeting Space Information

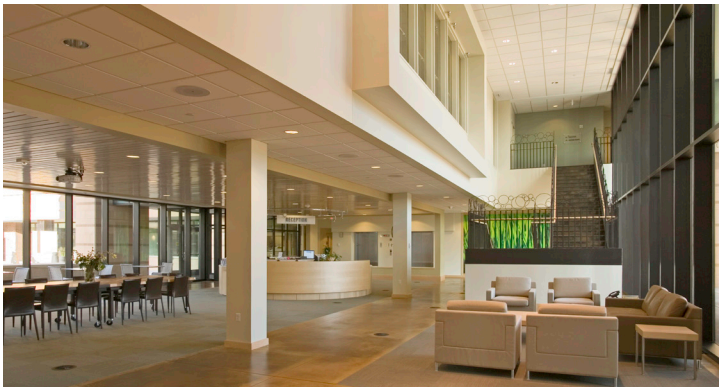
Floor 2



Room Name	Room Number	Capacity	Extension
Midway	2310	10	2024
West Side	2320	6	2025
Meriam Park	2410	12	2026
Como	2420	7	2027
Frogtown	2510	24	2028
North End	2520	14	2029
Summit-University	2610	26	2030

Non-Schedulable
Huddle Space

Wilder Center Meeting Space Information



(clockwise from top left)
Wilder Center, Wilder Center backyard,
Auditorium with round tables,
Rondo Dining Room, meeting room #2510,
Wilder Center Lobby, Auditorium with
theatre style seating.

Please contact Event Manager for
availability and rates:

651-280-2402 • meet@wilder.org
www.wilder.org/meet

