



# Community Perspectives on Climate Action in Saint Paul

## Feedback and Recommendations from Engagement Efforts

Author: Sera Kinoglu

June 2025

**Wilder  
Research®**  
Information. Insight. Impact.

# Executive summary

## WHAT ARE COMMUNITY MEMBERS MOST CONCERNED ABOUT?

---



### **Extreme weather**

From drought and floods to consistently warming weather, community members expressed deep concern about our changing climate. Many commented on issues related to preparedness, expressing doubts about the capacity of the City as well as their own household. Because of increasingly unpredictable weather patterns, difficulty securing insurance was noted, along with financial impacts across a number of spheres. Some of these impacts included higher costs for groceries, repairing damage related to extreme weather, and the cost of heating and cooling.



### **Poor air quality and related health impacts**

Community members raised concerns about air quality, particularly for individuals with heightened risk for health complications (e.g., people with asthma, older adults, and young children). Many mentioned the recent summer (2023) during which Minnesota had an unusually high number of air quality alert days. As temperatures warm and droughts persist, air quality is likely to become an increasingly persistent concern. Some comments also indicated traffic congestion and insufficient tree population as catalyzers for poor air quality.



### **Loss of green spaces, tree canopy, and biodiversity**

A noticeable loss of trees was frequently mentioned by community members, particularly trees removed due to emerald ash borer damage. Aside from a sense of sadness associated with tree loss, many commented on related impacts – less shade and higher cooling costs, decreased air quality, and cost of tree removal. Others expressed worries about fewer green spaces and natural areas, along with decreasing biodiversity resulting from a combination of development and climate change.

## WHAT DO COMMUNITY MEMBERS MOST WANT IN A SUSTAINABLE CITY?

---



### **Better access to sustainable transportation and neighborhoods that feel walkable, bikeable**

A priority for Saint Paul residents is a city that feels community-centric and that values low-emission methods of transportation. This includes expansion of the current infrastructure that supports electric vehicles; for example, several community members suggested incentives for switching to an electric vehicle along with a wider network of charging stations.

Regarding improvements, residents regularly noted the need for enhanced safety, greater convenience, and continuing the process to electrify city buses. A particular frustration related to convenience is the time required to use public transit as opposed to driving. Community members' comments stressed the importance of vibrant neighborhoods, with City support (through policies and programming) for expanding the presence and improving the success of small businesses.



### **Outreach and communications around climate action**

Residents across all other engagement activities recommended a stronger community presence by the City. In particular, they thought the City could enhance communication and outreach across Saint Paul communities on such topics as City initiatives, education about climate impacts, and information about available programs and resources.

Crucial to such engagement efforts is a focus on equity. Many residents expressed concern about the disproportionate impacts for different communities (most notably those that are primarily BIPOC), and cited a need to ensure that robust outreach and engagement plans be developed to build and maintain trusting relationships with community leaders.



### **Increased access to green spaces, including community gardens**

Community members described a strong interest in preserving existing green spaces and securing undeveloped areas for additional green space. They also suggested planting more trees to further expand the tree canopy, replace trees lost to disease, and mitigate air quality concerns; some residents specified species that may be better adapted for our current and changing climate. In addition to increasing the area dedicated to natural or green spaces, community members noted an interest in the City creating more community gardens to increase access for a greater share of residents.



### **An emphasis on renewable energy**

Residents frequently mentioned a desire to see greater emphasis on and investment in renewable and sustainable energy sources. Expanding financing for household energy-related costs also emerged as a priority among community members, with many citing the age of Saint Paul homes being a critical factor. Older homes often lack insulation and proper sealing, and may also have outdated heating and cooling systems that result in greater financial burden. While programs exist to partially address this concern, residents emphasized the importance of much more significant financial support for homes in need of weatherization and efficiency upgrades.



### **City support for community-led resilience efforts**

In correlation with residents' significant concerns related to extreme weather and lack of preparedness, many called for strong City support for community-led resilience efforts. While some comments identified this need broadly or without further detail, others specified the City's role as providing financial or material resources to community organizers leading such efforts.

Particularly in relation to preparedness, residents suggested the development of resilience hubs and resource centers. Coupled with the outreach and engagement noted above, residents expressed interest in the City providing information and education directly to neighborhoods. Offering neighborhood champions a clear line of communication with City staff and committing to collaborating on initiatives defined by the community would help bolster localized resilience and ensure that these initiatives are well-suited for their community context.



# CONTENTS

Introduction & background.....	1
About the CARP .....	1
Engagement context .....	2
Community feedback & recommendations.....	4
Prioritize healthy communities .....	4
Expand resilience efforts .....	8
Invest in energy efficiency .....	10
Implement deeper engagement and awareness building .....	11
Incentivize use of low-impact transportation .....	13
Improve waste management systems .....	14
Implement policies for a sustainable city .....	16
Appendix .....	19
A. Community engagement by the numbers.....	19
B. Data tables.....	20
C. Community profiles .....	26

# FIGURES

1. Learning questions developed in collaboration with City of Saint Paul staff.....	2
2. Percentage of survey participants identifying the following priorities for action .....	5
3. Percentage of survey participants who identified weather-related concerns.....	9
4. Percentage of survey participants identifying the following priorities for action .....	10
5. Community comments related to equity and engagement.....	13

# Introduction & background

## ABOUT THE CARP

The Saint Paul Climate Action and Resilience Plan (CARP) lays out a vision to make the city carbon neutral by 2050 while preparing for climate impacts and prioritizing equity. Specific goals include increasing clean energy usage in buildings, expanding public transit and biking infrastructure, and protecting natural ecosystems.

Central to the Plan is a commitment to equity, ensuring all residents benefit from the City's actions—especially those most impacted by climate change, who often are low-income, Black, Indigenous, and other people of color who live in neighborhoods with historical and current racial disparities. By fostering collaboration with community members, businesses, and other stakeholders, Saint Paul aims to reduce emissions, improve air quality, create green jobs, and build a city ready to thrive in a changing climate.

The current Plan was developed through research, community input, and collaboration with experts and stakeholders. The Plan uses 2015 as a baseline year to assess emissions, sets a goal of carbon neutrality by 2050, and includes both initiatives to mitigate greenhouse gas emissions and strategies to reduce vulnerabilities. The Plan integrates strategies to address broader issues like housing, transportation, and workforce development while promoting co-benefits such as improved air quality, public health, and economic opportunities.

The City uses the Plan as a guiding framework to achieve the goal of carbon neutrality by 2050 and to address the local impacts of climate change. The Plan informs policy decisions and prioritizes investments and initiatives across sectors such as energy, transportation, waste, and natural resources. It provides actionable strategies to reduce emissions, enhance resilience, and improve equity, focusing on areas with the greatest potential impact, like energy efficiency, home weatherization, and transportation options. The Plan's metrics and benchmarks allow the City to track progress.

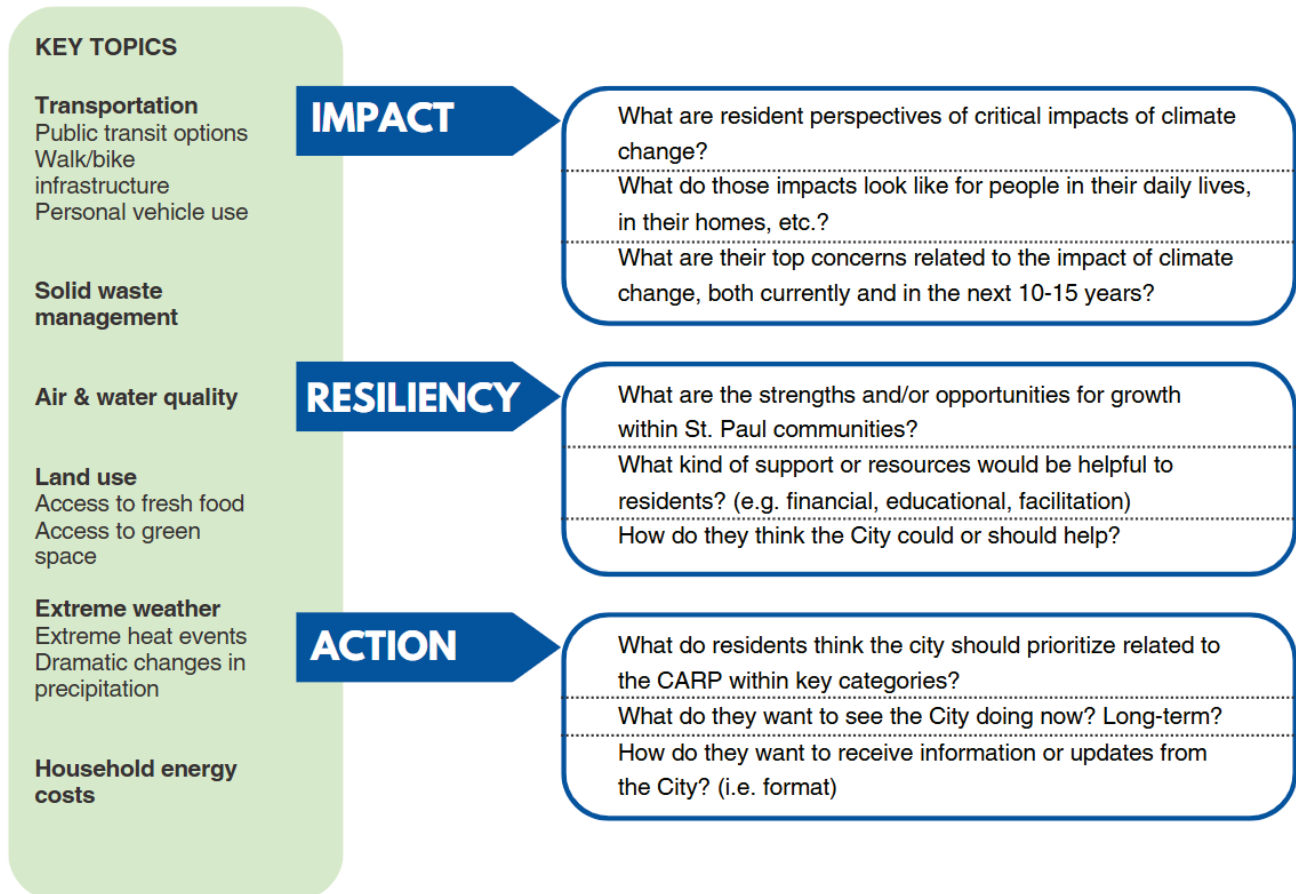
## ENGAGEMENT CONTEXT

The City contracted with Wilder Research to implement community engagement activities and mechanisms for feedback. Through a series of discussions with City staff, as well as the CARP Advisory Committee, Wilder developed an engagement plan which included several modes for this feedback.

### 1. Learning questions developed in collaboration with City of Saint Paul staff

#### Learning questions:

Our roadmap for the development of engagement plans & tools



Utilizing the key topics provided by the City, in conjunction with the learning questions above, Wilder selected several approaches for engaging with members of the community:

#### ■ Community conversation toolkit

In collaboration with City staff, Wilder created a document that outlined a brief primer on climate change, its impact in Saint Paul, and information about the CARP. The toolkit provided a set of suggested discussion questions, tips for facilitation, and instructions for sharing notes or comments back with our team.

## ■ Survey

In order to gather input from a wide range of residents, Wilder developed and fielded a web survey that was open for the duration of the engagement period. The survey asked participants to identify top concerns related to climate change, as well as priorities for the City's CARP.

## ■ Event-based activities

Tabling at community events provided an opportunity to engage with residents in person. The activities designed and implemented by Wilder achieved two key goals: to collect responses about perspectives of climate impacts and City initiatives, and to increase community awareness around the CARP and climate issues in Saint Paul. At these events, Wilder implemented bead jar voting to gauge community priorities and a talkback board for open-ended comments about concerns and impacts related to climate change.

## ■ Climate forum

Building on the City's inaugural Climate Forum in 2023, Wilder collaborated with City staff to host and facilitate the Forum in March 2025. Discussion questions were developed for small groups as well as by ward, and these were facilitated by Wilder and City staff, as well as volunteers from the Advisory Committee.

## ■ Listening sessions

Acknowledging the disparity in impacts felt by different communities across Saint Paul, Wilder and City staff agreed on “focus areas” of the City in which there was evidence of increased vulnerability to issues such as flooding, heat islands, and air quality concerns. To gather feedback from residents in these areas, Wilder hosted listening sessions in the community. During these sessions, residents discussed in depth the ways that climate change has impacted their daily lives, as well as notable opportunities for the City to mitigate such impacts and to support localized efforts.

Data from all activities were aggregated and synthesized using a mixed-methods approach of both qualitative and quantitative analyses. The resulting themes and findings are presented below.



Bead jar voting setup for community events



# Community feedback & recommendations

The themes in this section were derived from synthesized findings across all engagement modes and, therefore, represent both survey data and direct comments from participants of engagement activities.

89% of survey respondents said that they are “very concerned” about climate change.

## PRIORITIZE HEALTHY COMMUNITIES

### INVEST IN BIKE AND WALK INFRASTRUCTURE

20% of survey participants identified **improving conditions for walking and bicycling** as a top priority for the City.

Community members stressed the importance of vibrant neighborhoods with City support (through policies and programming) for expanding the presence and improving the success of small businesses. By rooting neighborhoods in this way, community members suggested a natural outcome of improvements to the walkability or bikeability of the City.

21% of survey participants identified **locating more stores and services within walking distance of where people live** as a top priority for the City.

To make progress toward this vision, residents offered suggestions for infrastructure improvements, such as the creation of more protected bike lanes, safer crosswalks and ways to cross busy intersections, and more strongly-enforced speed limits throughout the city. Some comments also mentioned an interest in expanding bike share programs, as well as incentives that might make e-bikes more accessible to a wider group of residents.

### MITIGATE AIR QUALITY ISSUES WITH TREE PLANTING

73% of survey participants identified **poor air quality** as a top concern.

Community members raised concerns about air quality, particularly for individuals with heightened risk for health complications (e.g., people with asthma, older adults, and young children). Many mentioned the recent summer (2023) during which Minnesota had an unusually high number of air quality alert days. As temperatures warm and droughts persist, air quality is likely to become an increasingly persistent concern. Some comments also indicated traffic congestion and insufficient tree population as catalyzers for poor air quality.

---

With climate change, I worry about increasing health problems like heat-related stress [and] asthma and respiratory diseases from pollution for children and the elderly.

---

---

Not being able to go outside because of air quality – it's a tangible thing that didn't happen when I was a kid.

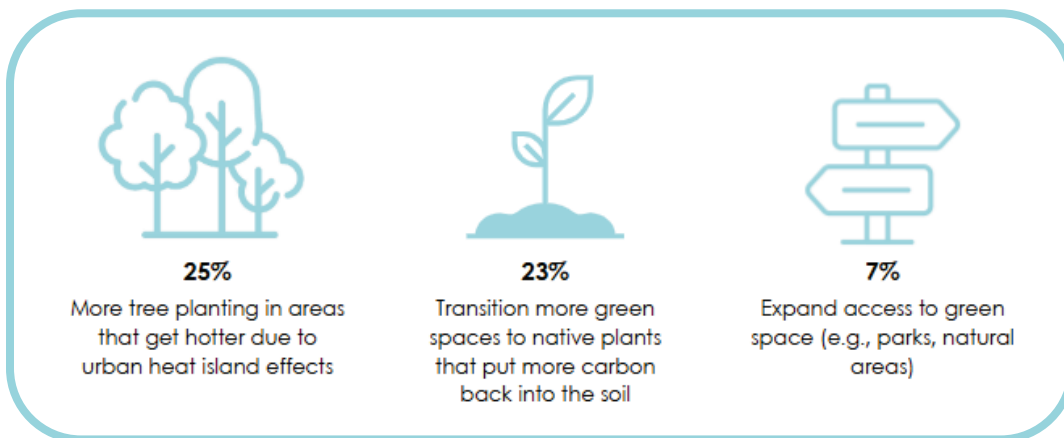
I feel that my daughter's allergies and asthma have gotten worse over the past couple of years.

[Because of air quality concerns], my children won't have the [same] opportunities for outdoor experiences I've had.

---

Given the significance of concerns related to air quality, a frequent recommendation among residents was for the City to plant more trees – particularly those that are fast-growing or more mature. Increasing the amount of green space (e.g., parks, natural areas, and gardens) will further support the mitigation of air quality issues.

## 2. Percentage of survey participants identifying the following priorities for action



A noticeable loss of trees was frequently mentioned by community members, particularly trees removed due to emerald ash borer damage. Aside from a sense of sadness associated with tree loss, many commented on related impacts – less shade and higher cooling costs, decreased air quality, and cost of tree removal. Others expressed worries about fewer green spaces and natural areas, along with decreasing biodiversity resulting from a combination of development and climate change.

---

Loss of trees, especially emerald ash trees [has been an issue]. Our backyard went from shady and comfortable to hot and unbearable, and our house is also warmer in the summer because of [lack of] shade. This is true for boulevard trees, too.

---

While some residents acknowledged the City's efforts to replace trees lost to disease, many also noted a need for tree care education alongside such plantings. These comments mentioned an interest in the City sharing information with homeowners who have had trees removed or replaced in order to ensure that new plantings are successful.

---

Greenery and trees are vital, but it's just as vital to plant appropriate trees in the right areas [and to have] signs on trees saying "this tree treats the rainwater."

---

47% of survey participants identified an **increase in invasive species and disease-carrying insects** as a top concern.

Because of widespread issues with pests – most notably, emerald ash borer – and ensuing damage or removal, many community members felt that the City should consider offering financial support for residents dealing with this issue. They noted the high cost of tree removal or treatments as well as for purchasing new trees and replanting.

## INCREASE ACCESS TO GREEN SPACES, INCLUDING COMMUNITY GARDENS

Community members described a strong interest in preserving *existing* green spaces and securing undeveloped areas for additional green space. Relatedly, many expressed worries about *fewer* green spaces and natural areas, along with decreasing biodiversity resulting from a combination of development and climate change.

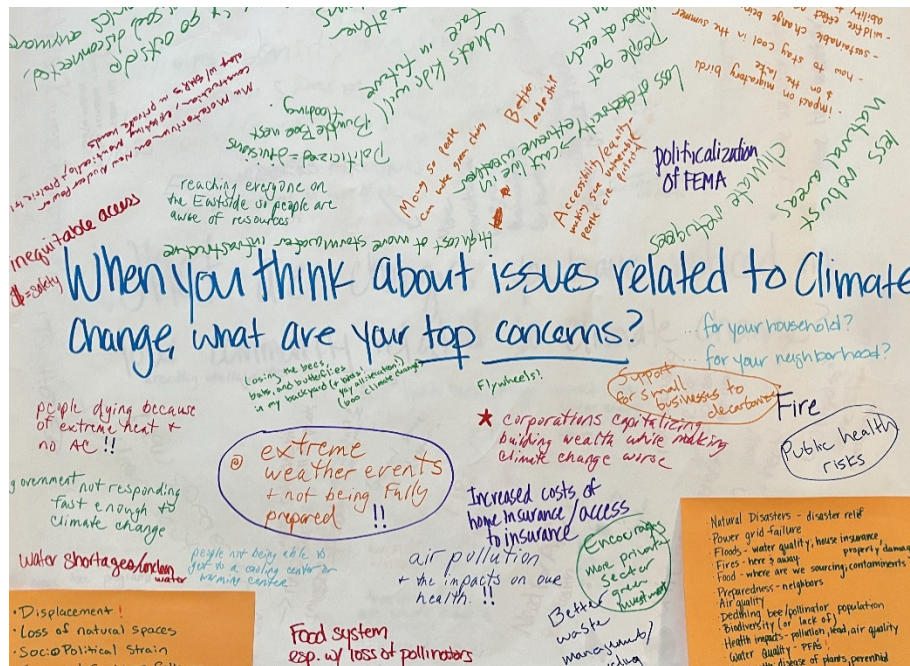
Another approach to supporting healthy and sustainable communities, as recommended by residents, is to work towards expanding space dedicated to community gardens. In addition to increasing their resilience against potential food sourcing issues (e.g., increasing cost of groceries due to challenges with farming), community gardens benefit residents through greater time spent in nature and social connectedness.

---

Green spaces that are not being well utilized could be more opportunities for community gardening.

The growing season is changing and there are more disruptions due to extreme weather. [We] can't grow peas and spinach anymore because it gets too hot too fast in spring.

---



Community listening session discussion notes for the question: When you think about issues related to climate change, what are your top concerns?

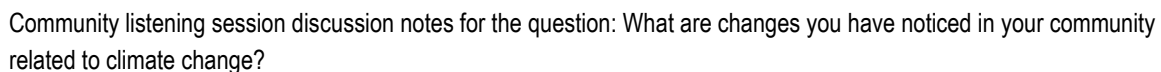
Variations on this suggestion included implementing more urban agriculture and creating urban food forests, which would align with resident interest in increasing green spaces and tree canopy. Alongside the creation of such spaces, residents recommended accessible gardening education for those with their own home gardens, as well as neighborhoods with community gardens.

**Survey respondents said they were personally impacted by the following issues related to healthy communities:**

- 53%** Health issues due to air pollution (including "air quality alert" days)
- 44%** Increased presence of invasive species (e.g., pests in your garden or diseased trees)
- 40%** Longer allergy season
- 27%** Increased contact with disease-carrying insects (e.g., mosquitos, ticks)
- 25%** Heat-related health challenges
- 7%** More frequent asthma attacks



## IMPROVE PREPAREDNESS FOR EXTREME WEATHER



7% of survey participants identified **improved preparedness for extreme weather events** as a top priority for the City.

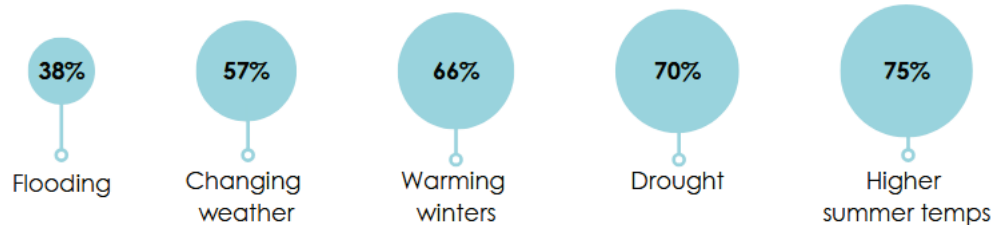
Community Perspectives on Climate Action in Saint Paul

---

[I feel] anxiety about the increase in super storms, like the one that knocked power out for days last summer in parts of St. Paul. It feels like it's not a matter of if, but when it will be our turn.

---

### 3. Percentage of survey participants who identified weather-related concerns



## SUPPORT COMMUNITY/LOCALIZED RESILIENCE EFFORTS

In correlation with residents' significant concerns related to extreme weather and lack of preparedness, many called for strong City support for community-led resilience efforts. While some comments identified this need broadly or without further detail, others specified the City's role as providing financial or material resources to community organizers leading such efforts. Particularly in relation to preparedness, residents suggested the development of resilience hubs and resource centers.

10% of survey participants identified **support for community-led efforts** as a top priority for the City.

Coupled with the outreach and engagement noted above, residents expressed interest in the City providing information and education directly to neighborhoods. Offering neighborhood champions a clear line of communication with City staff and committing to collaborating on initiatives defined by the community would help to bolster localized resilience and ensure that these initiatives are well-suited for their community context.

---

The City needs to support communities organizing, including collective action and resource sharing.

[We need] asset-based community development - use the knowledge and strengths of people in the city: people who know how to grow things [and] garden, people who know how to bike and fix bikes, [people who can educate about] solar energy.

---

While perhaps outside of the City's direct purview, residents also described a desire for greater community- and relationship-building. Many talked about the importance of deepening and encouraging sharing networks (e.g., utilizing an approach like the Minnesota Tool Library but with a wider reach), particularly at the neighborhood level. In connection with these efforts, residents would like to see not only the promotion of environmentally-friendly practices like reuse and repair (e.g., via PSAs shared by the City), but also for the City to use creative approaches to encourage or incentivize these practices within communities.

---

I love seeing all the grassroots mending and repurposing work.

---

**Survey respondents said they were personally impacted by the following issues related to resilience:**

**71%** Longer periods without rain (drought)

**14%** Flooding or flood damage

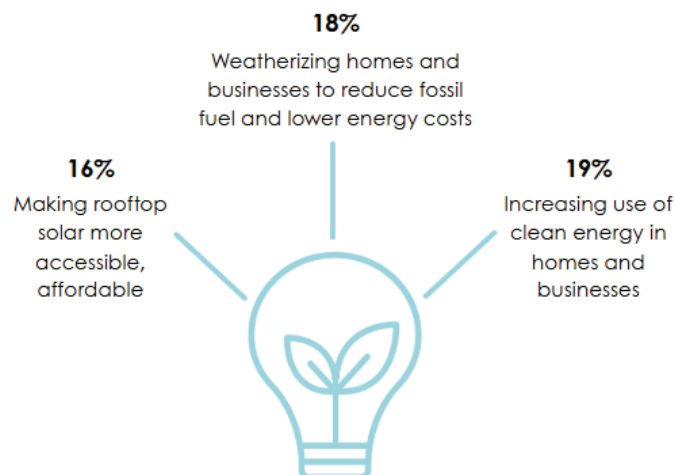
## INVEST IN ENERGY EFFICIENCY

### INVEST IN RENEWABLE ENERGY

31% of survey participants identified **emissions reduction** as a top priority for the City.

Residents frequently mentioned a desire to see greater emphasis on and investment in renewable energy sources. Rooftop solar was also a common theme among community comments, with some residents suggesting that tall buildings and parking lots would be the most logical first step for wider implementation. While a majority of comments about clean energy were expressing general support for this action area, many community members also specified geothermal districts as a top priority related to energy.

#### 4. Percentage of survey participants identifying the following priorities for action



## EXPAND FINANCING FOR ENERGY-RELATED COSTS

---

Financial burdens hit some people and families more than others, and even compound (e.g., a house with poor windows and insulation leaks more air, is hotter in the summer, colder in the winter, and fixing this costs lots of money).

---

Expanding financing for household energy-related costs emerged as a priority among community members, with many citing the age of Saint Paul homes being a critical factor. Older homes often lack insulation and proper sealing, and may also have outdated heating and cooling systems that result in greater financial burden. While programs exist to partially address this concern, residents emphasized the importance of much more significant financial support for homes in need of weatherization and efficiency upgrades.

*Survey respondents said they were personally impacted by the following issues related to energy:*

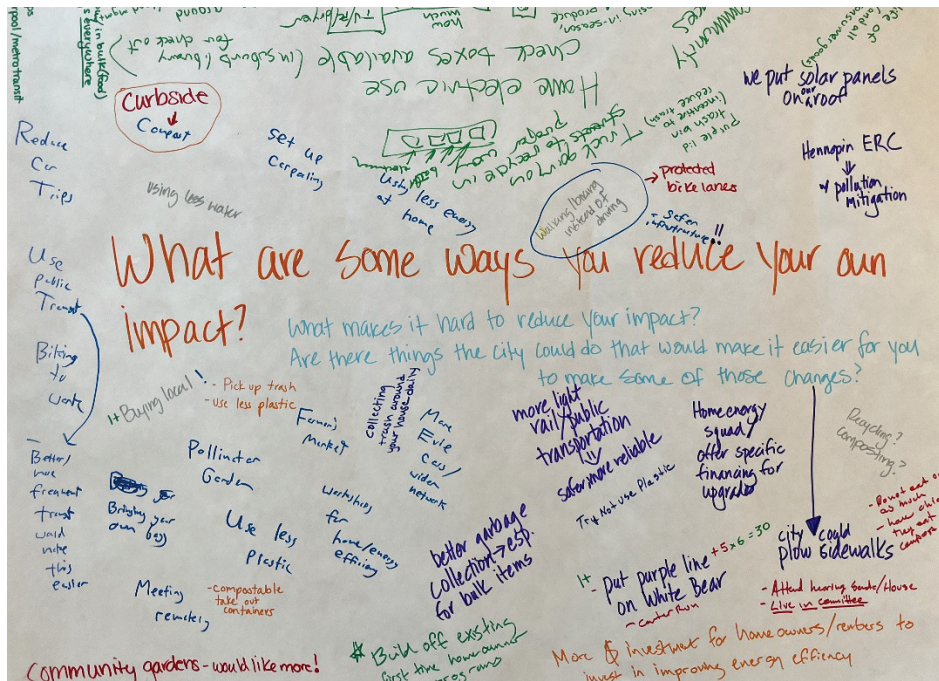
**66%** Increased air conditioning use

## IMPLEMENT DEEPER ENGAGEMENT AND AWARENESS BUILDING

While not a prominent theme from survey responses (5% identified community engagement as a priority for action), residents across all other engagement activities enthusiastically recommended a stronger community presence by the City. In particular, they thought the City could enhance communication and outreach across Saint Paul communities, including on the following topics:

- The City's existing climate goals and initiatives  
*What is the City working on? What is it planning to do? What progress has been made?*
- Opportunities for feedback about City initiatives or climate impact concerns  
*How can residents reach City staff? What channels of feedback are available?*
- Information about climate impacts, and education about ways to reduce impact  
*How do different personal, business, or City-level actions impact climate?*
- Available programs and resources, including financial supports (e.g., for weatherization or native plantings)  
*How can residents access different types of support? What are they eligible for?*





Community listening session discussion notes for the question: What are some ways you reduce your own impact?

Residents expressed a desire for more frequent updates from the City about these topics, alongside regular feedback loops. A few community members also identified youth in particular as an important group for more focused engagement, linking their concern for future generations and a desire for youth to be better informed about climate impacts and action.

---

Help build political and public will around climate by focusing efforts in a smaller area where you can show real impact.

---

## FOCUS ON EQUITY

Crucial to such engagement efforts is a focus on equity. Many residents expressed concern about the disproportionate climate impacts for different communities (most notably those that are primarily BIPOC), and cited a need to ensure that robust outreach and engagement plans be developed to build and maintain trusting relationships with community leaders. For example, the City could utilize available data to ensure that engagement efforts reach neighborhoods that have been identified as having a higher climate vulnerability index.

Communication with and outreach to disproportionately impacted areas of the City should be conducted (or available) in multiple languages, ideally by members of the community. For example, utilizing a “trusted messenger” approach may improve reception of such outreach as well as build stronger relationships between the City and community members.

## 5. Community comments related to equity and engagement

Not all solutions (e.g. solar panels, geothermal, electric cars, Ridwell boxes, etc.) are feasible for everyone (e.g. renters, lower income, older homes)

Bringing in diversity of communities into these processes – [ensure] accessibility through various languages

Focus on what will help  
those in the city who  
are most vulnerable to  
climate change

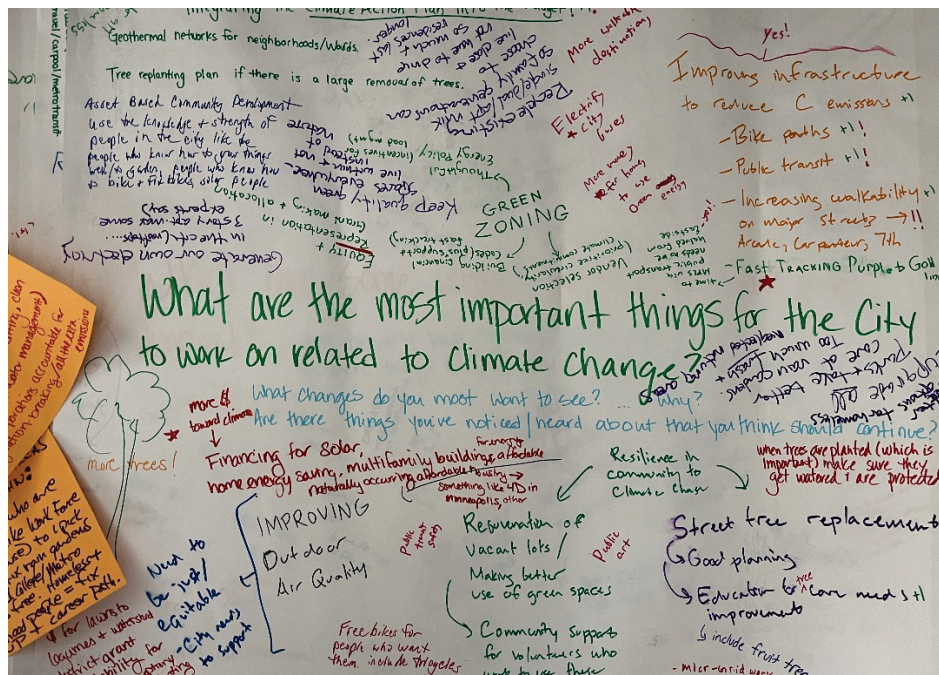
Making sure that these benefits come to all neighborhoods so people see that change is happening



Locate city resources  
in neighborhoods  
with greatest need

## INCENTIVIZE USE OF LOW-IMPACT TRANSPORTATION

A priority for Saint Paul residents is a city that feels community-centric and that values low-emission methods of transportation. This includes expansion of the current infrastructure that supports electric vehicles; for example, several community members suggested incentives for switching to an electric vehicle along with a wider network of charging stations.



Community listening session discussion notes for the question: What are the most important things for the City to work on related to climate change?

## IMPROVE PUBLIC TRANSPORTATION INFRASTRUCTURE

Among survey respondents, the most frequently identified action item for the City was to improve public transit services and safety, and this was a top theme among comments from community members. Regarding improvements, residents regularly noted the need for enhanced safety, greater convenience, and continuing the process to electrify city buses. A particular frustration related to convenience is the time required to use public transit as opposed to driving.

33% of survey participants identified **improving public transit services and safety as a top priority for the City.**

## PROMOTE USE OF ELECTRIC VEHICLES

Many residents reacted positively to Saint Paul's Evie carshare program and expressed interest in seeing this or similar programs expanded or serving more parts of the City. Making more vehicles available and in more areas would generate increased awareness about carsharing as well as make it a more attractive option for people who might otherwise drive a personal vehicle.

Outside of carsharing programs, some community comments noted that there should be greater promotion and incentivization of electric vehicles (EVs). However, several such comments added that the current infrastructure must be improved – i.e., a broader charging network, particularly for multi-unit dwellings – in order for more residents to “buy in” to EV use.

9% of survey participants identified **increased use of electric vehicles, including better access to EV charging**, as a top priority for the City.

## IMPROVE WASTE MANAGEMENT SYSTEMS

### EXPAND THE CONVENIENCE OF HOUSEHOLD WASTE OPTIONS

Though not asked about explicitly in the survey, discussion with community members indicated an interest in ensuring that composting options (for both food and yard waste) were more accessible. Some residents identified curbside pickup as a key action item, while others spoke more broadly about wanting convenient options for food and yard waste. Namely, they suggested additional locations for dropping these types of waste; proposed locations included community centers and libraries.

---

Make food composting easier so people don't have to bring their food compost to inconvenient locations that are only open on weekends in the winter time.

---

## FOCUS ON LOWERING OVERALL WASTE CREATED

11% of survey participants identified **decreasing the amount of solid waste generated** as a top priority for the City.

Acknowledging the impact of the amount of waste generated at all levels, residents would like to see the City work on encouraging proper waste management behavior for individuals as well as businesses. While materials exist – particularly those developed by Ramsey County – community comments suggested that there could be broader distribution, expanded and tailored materials for different groups, and overall citywide promotion of this goal.



**When asked about which actions they take to reduce their climate impact, 89% of survey respondents said they reduce waste and increase recycling and composting – the highest proportion of all actions listed in the survey.**

In line with comments regarding accountability (see above), some residents recommended a combination of incentives for low-waste champions and disincentives or penalties for not following City sustainability guidelines related to waste.

---

I am thrilled to learn of new waste reduction initiatives. I'm so discouraged to attend events when there is no provision for recycling or composting, and I do express this to the organizer. Could there be a penalty for failing to use an appropriate caterer or to arrange for use of bins from district council or Ramsey County?

---

A smaller number of community comments expressed an interest in the City imposing restrictions on single-use plastics and plastic shopping bags. (Or, in the case of plastic bags, adopting a similar approach to the one that Minneapolis has in place.)

## SUPPORT SMALL BUSINESSES TO BECOME MORE SUSTAINABLE

Many residents recognize that small business owners likely face greater barriers than larger or more established operations when it comes to implementing sustainable practices. Importantly, utilizing sustainable materials to manage their sales is more costly (e.g., for takeout containers or bags for customer purchases and to source materials locally) and may act as a barrier to implementation. The significant challenges faced by newly opened or small businesses compound this issue.

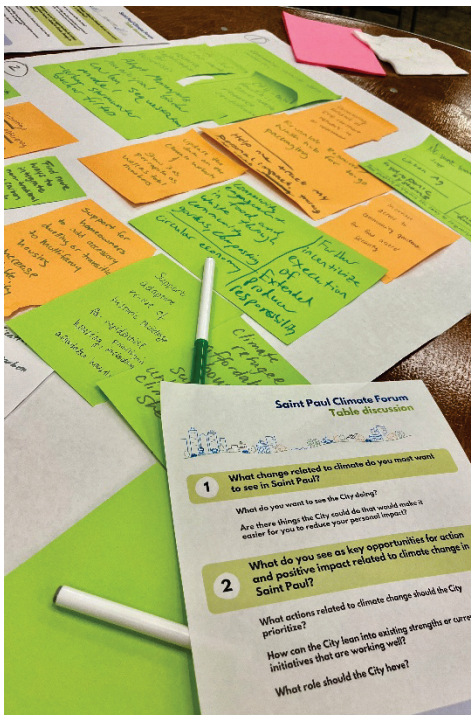


Therefore, residents suggested stronger support for small business owners to help them decrease waste and opt for sustainable choices. These comments noted financial support as well as access to business consultants specializing in sustainability.

“

As a former restaurant owner, I understand the difficulty in switching to compostable/recyclable take out containers. They are significantly more expensive than Styrofoam clamshells or thinner plastic containers and the compostable containers use newer materials and unfamiliar shapes that may not work with the food you sell. Also, these items are sold in large quantities that only generate more trash if you mistakenly order something you can't use. Connecting with local business owners with examples of good 'green' alternatives (and suppliers) and financial support (\$500-1000) to get them started on a new take-out path could be a good solution. Hamline Midway Coalition has a very good Green To-Go initiative in their community for local businesses.

## IMPLEMENT POLICIES FOR A SUSTAINABLE CITY



In alignment with current City initiatives and targets, residents mentioned ensuring that policies are in place to maintain high standards for construction and new building development throughout Saint Paul. In particular, they want to see developers using sustainable materials and designing structures in ways that reduce overall impact on the environment.

In addition to these comments, some community comments indicated doubt about the City's level of enforcements of such policies or restrictions, and they stressed the importance of transparency along with greater communication around policy enforcement. Some suggested that the City refer developers to information or materials that make a strong economic case for net zero buildings as being ultimately cost effective.

Related to construction and development, residents expressed interest in the City taking a closer look at current policies related to zoning and density to ensure land use that is supportive of the City's climate impact mitigation goals. Though not expressly related to climate impacts, some community comments referenced a need for more affordable housing alongside prevention of gentrification.

Suggestions related to City policies included:

- Conversion of empty buildings in downtown to housing; creative or adaptive reuse of historic buildings
- Holding landlords accountable for ensuring properties are up to code and, therefore, more efficient
- City-funded incentives or subsidies for sustainable development projects
- Enact ordinances that require new roofing to use lighter shingles or incentivize green roofs
- Maintain adequate staffing specifically for climate-related work in the City
- Implementation of a tool that informs about the social cost of carbon for planning, policy, and budget decision-making
- Allowance for stacking of funding or incentives for projects and developments

## TAKE A STRONG STANCE ON CLIMATE ACTION

### **“We want to see the City think big and act big.”**

Broadly speaking, residents emphasized a desire to see the City “step up” and not be afraid to take bold and innovative action related to climate change. Comments like these went hand-in-hand with recommendations for the City to generally invest more in climate action and to prioritize this work in City plans and budgets.

---

Take a stand – our city should be on record as working against climate change (like some cities are known as sanctuary cities). Be able to say, “We are the city that's doing this!”

Make the climate dashboard an activist tool [so we can see] what is most needed, where should we apply pressure, and how to effectively advocate for progress.

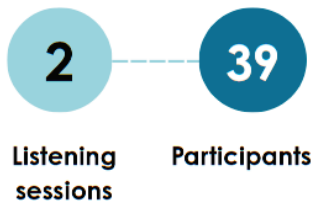
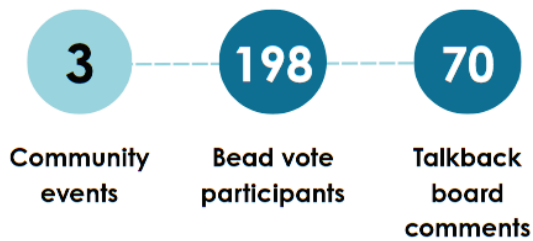
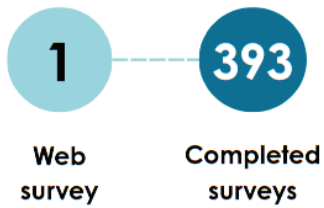
---

Some residents noted that a natural outcome of this type of citywide focus would be an enhanced green workforce, in which education and employment opportunities for careers in renewable energy, sustainable development, and similar career paths would be more abundant.

Finally, community members want to see the City playing a role in holding accountable the corporations and businesses that are responsible for larger shares of pollution and negative environmental impacts. Similarly, some residents noted that they would like to see stronger investment in sustainability and climate action from the private sector.

# Appendix

## A. COMMUNITY ENGAGEMENT BY THE NUMBERS



11 Responses from the Community Conversation Toolkit

Comments from advisory committee, feedback from council presentations



## B. DATA TABLES

Some percentages may not add up to 100% due to rounding

**B1. How informed do you feel regarding climate change topics, such as the causes and impacts of climate change and actions needed to slow or stop it? (N=392)**

	N	%
Very informed	254	65
Somewhat informed	130	33
Not at all informed	8	2

**B2. How concerned are you about climate change in general? (N=392)**

	N	%
Very concerned	348	89
Somewhat concerned	30	8
Not at all concerned	14	4

**B3. Climate change can impact people in many different ways. In the past 3-5 years, have you personally been impacted by any of the following effects of climate change? (Select all that apply) (N= 393)**

	N	%
Longer periods without rain (drought)	277	71
Increased air conditioning use	260	66
Health issues due to air pollution (including "air quality alert" days)	209	53
Increased presence of invasive species (e.g., pests in your garden or diseased trees)	173	44
Longer allergy season	158	40
Increased contact with disease-carrying insects (e.g., mosquitos, ticks)	107	27
Heat-related health challenges	97	25
Flooding or flood damage	53	14
More frequent asthma attacks	28	7
Something else	59	15
I have not experienced any impacts	25	6

**B4. The following are current or potential climate change impacts in Saint Paul. Which of the following do you feel personally most concerned about? (Select all that apply) (N=391)**

	N	%
Higher summer temperatures (heatwaves)	294	75
Poorer air quality	287	73
Longer periods without rain (drought)	273	70
Warmer winter temperatures	257	66
General change in weather patterns	222	57
Increase in invasive species and disease-carrying insects (e.g., mosquitos, ticks)	183	47
Access to clean water	155	40
Heavier rainfalls & flooding	148	38
Something else	53	14
I have no concerns about climate impacts	10	3

**B5. Thinking about 10-15 years from now, are your concerns related to climate change... (N=392)**

	N	%
The same?	155	39
Different?	175	45
Not sure	62	16

**B6. The City of Saint Paul has been working on action items from the previous Climate Plan. In your opinion, which of the following action areas should be prioritized in the updated Plan? (Select up to three) (N=390)**

<b>Transportation</b>	<b>N</b>	<b>%</b>
Improving public transit services and safety	128	33
Improving conditions for walk and bicycling	76	20
Increased use of electric vehicles, including better access to EV charging	33	9
Locating more stores and services within walking distance of where people live	81	21
<b>Energy</b>		
Weatherizing homes and businesses to reduce fossil fuel and lower energy costs	71	18
Increasing use of clean energy in homes and businesses, such as replacing gas appliances with electric alternatives such as heat pumps and induction cooking	72	19
Making rooftop solar more accessible/affordable	62	16
Reducing emissions from power plants and heavy industry	121	31
Resilience and preparedness		
Improved preparedness for extreme weather events	29	7
Improved communications about what to do in extreme weather events	4	1
More tree planting in areas that get hotter due to urban heat island effects	99	25
More investment in measures that will prevent flooding	10	3
<b>Community</b>		
Supporting community-led efforts to build resilience and reduce emissions	38	10
More ongoing community engagement around climate action	20	5
<b>Solid waste management</b>		
Decreasing amount of solid waste generated	43	11
Improving solid waste systems to reduce emissions	21	5
More education about how to properly dispose of different waste products	17	4
<b>Environment</b>		
Expanding access to green space (e.g., parks, natural areas)	28	7
Transition more green spaces to native plants that put more carbon back into the soil	89	23
Reducing water pollution from salt, plastics, and more	59	15
<b>Other</b>		
Something else	45	12

**B7. Which of the following actions are you already doing, or are interested in doing, to reduce your climate impact? (Select all that apply) (N=391)**

	N	%
Reduce waste and increase recycling and composting	346	89
Walk, bike, or take more transit	293	75
Plant more trees and native vegetation in private yards	247	63
Weatherize my home (e.g., add insulation)	198	51
Participate in home energy programs	185	47
Use electric transportation (e.g., electric bike or car)	149	38
Help maintain trees and native vegetation in public spaces	145	37
Other	51	13
No actions at this time	10	3

**B8. Is there anything that makes it challenging for you to more fully engage in the actions indicated above? (Select all that apply) (N=382)**

	N	%
Cost	155	59
Convenience/lack of time	176	54
I don't know where to start or I need more information	75	20
Don't think it is necessary	11	3
Something else	59	15
No challenges at this time	34	9

**B10. Based on the map above, which neighborhood do you live in? (N=387)**

	N	%
Battle Creek-Conway-Eastview-Highland Hills	6	2
Payne-Phalen	29	8
Greater East Side	7	2
West Side	6	2
Dayton's Bluff	6	2
North End	7	2
Frogtown	6	2
Summit-University	17	4
West 7th/Fort Road	8	2
Como	41	11

**B10. Based on the map above, which neighborhood do you live in? (N=387)  
(continued)**

	<b>N</b>	<b>%</b>
Hamline-Midway	48	12
St. Anthony Park	13	3
Union Park	48	12
Macalester-Groveland	70	18
Highland	22	6
Summit Hill	8	2
Downtown	17	4
I do not live in Saint Paul	28	7

**B11. Do you have any children under the age of eighteen (18) that currently live in your household at least half of the time? (N=385)**

	<b>N</b>	<b>%</b>
Yes	91	24
No	294	76

**B12. How do you identify your race/ethnicity? (Select all that apply) (N=362)**

	<b>N</b>	<b>%</b>
American Indian, Native American, or Alaska Native	2	2
Asian	23	6
Black or African American	19	5
Hispanic or Latino/a/x	15	4
Native Hawaiian or Pacific Islander	3	1
White	311	86
Prefer to self describe	9	3
Prefer not to answer	25	7



**B13. What is your current living arrangement? (N=385)**

	N	%
Rent the place I live	84	22
Own the place I live	251	65
Something else	38	10
Prefer not to answer	12	3

**B14. How long have you lived in St. Paul? (N=384)**

	N	%
Less than 1 year	36	9
1-3 years	68	18
4-10 years	82	21
11-19 years	58	15
20+ years	124	32
Prefer not to answer	16	4

## C. COMMUNITY PROFILES

### C1. Map of neighborhood locations included in community profiles





**SAINT PAUL**  
MINNESOTA



**Minnesota**  
Compass

## Community Profiles

Dayton's Bluff Neighborhood, Saint Paul, Minnesota



### Dayton's Bluff

<b>Total population</b>	17,978 (±1,406)	100% (±8%)
<b>Sex (2018-2022)</b>		
Male	9,161 (±743)	51% (±4%)
Female	8,817 (±849)	49% (±5%)
<b>Age (2018-2022)</b>		
Under 5 years	1,205 (±267)	7% (±1%)
5-9 years	1,609 (±313)	9% (±2%)
10-14 years	1,404 (±243)	8% (±1%)
15-17 years	633 (±171)	4% (±1%)
18-24 years	1,800 (±300)	10% (±2%)
25-34 years	3,318 (±421)	18% (±2%)
35-44 years	2,245 (±295)	12% (±2%)
45-54 years	2,131 (±310)	12% (±2%)
55-64 years	1,691 (±258)	9% (±1%)
65-74 years	1,302 (±298)	7% (±2%)
75-84 years	469 (±135)	3% (±1%)
85 years and older	170 (±72)	1% (±0%)

<b>Race &amp; Ethnicity (2018-2022)</b>		
White	5,990 (±641)	33% (±4%)
Of Color	11,209 (±1,559)	62% (±9%)
Black or African American	2,770 (±630)	15% (±4%)
American Indian and Alaska Native	139 (±93)	1% (±1%)
Asian	5,637 (±984)	31% (±5%)
Native Hawaiian and Other Pacific Islander	suppressed	suppressed
Other race	suppressed	suppressed
Two or more races	1,085 (±382)	6% (±2%)
Hispanic or Latino	2,253 (±565)	13% (±3%)
<b>Language spoken (2018-2022)</b>		
Population (5 years and older)	16,773 (±1,277)	100% (±8%)
English only	10,395 (±934)	62% (±6%)
Language other than English	6,378 (±1,582)	38% (±9%)
Speak English less than "very well"	3,235 (±599)	19% (±4%)
<b>Disability status (2018-2022)</b>		
Total population for whom disability status is determined	17,830 (±1,407)	100% (±8%)
Population with a disability	2,592 (±383)	15% (±2%)
<b>Nativity (2018-2022)</b>		
Foreign born	3,807 (±608)	21% (±3%)
<b>Residence one year ago (2018-2022)</b>		
Population (1 year and older)	17,811 (±1,402)	100% (±8%)
Same residence	15,774 (±1,394)	89% (±8%)
Different residence in the U.S.	1,977 (±378)	11% (±2%)
Different residence outside the U.S.	suppressed	suppressed

## Quality of life

### Income and poverty

<b>Household income (2022 dollars) (2018-2022)</b>		
Total households	6,007 (±337)	100% (±6%)
Less than \$35,000	1,696 (±283)	28% (±5%)
\$35,000-\$49,999	778 (±162)	13% (±3%)
\$50,000-\$74,999	1,173 (±223)	20% (±4%)
\$75,000-\$99,999	870 (±200)	15% (±3%)
\$100,000 or more	1,489 (±236)	25% (±4%)
Median household income (2022 dollars)	\$62,635 (±\$30,156)	100% (±48%)

<b>Poverty (2018-2022)</b>		
All people for whom poverty status is determined	17,771 (±1,405)	100% (±8%)
With income below poverty	3,410 (±677)	19% (±4%)
With income 100-149 of poverty	1,886 (±528)	11% (±3%)
With income 150-199 of poverty	2,101 (±616)	12% (±4%)
With income 200 of poverty or higher	10,375 (±1,240)	58% (±7%)
17 years and younger (percent of people under age 18)	1,498 (±253)	31% (±5%)
18-24 (percent of people age 18-24)	323 (±133)	18% (±7%)
25-34 (percent of people age 25-34)	385 (±126)	12% (±4%)
35-44 (percent of people age 35-44)	440 (±113)	20% (±5%)
45-54 (percent of people age 45-54)	335 (±101)	16% (±5%)
55-64 (percent of people age 55-64)	265 (±120)	16% (±7%)
18-64 (percent of people 18-64)	1,747 (±267)	16% (±2%)
65 years and older (percent of people age 65+)	165 (±76)	9% (±4%)

## Health coverage

<b>Health coverage (2018-2022)</b>	2,592 (±383)	15% (±2%)
Total population for whom health insurance coverage status is determined	17,830 (±1,407)	100% (±8%)
Total population age 65 and under for whom health insurance coverage status is determined	15,999 (±1,055)	90% (±6%)

## Housing

<b>Total housing units (2018-2022)</b>		
Total housing units	6,323 (±316)	100% (±5%)
<b>Owned and Rental Housing (2018-2022)</b>		
Vacant housing units	316 (±129)	5% (±2%)
Occupied housing units	6,007 (±337)	95% (±5%)
Average household size	2	100% (±3%)
Owner-occupied	3,354 (±288)	53% (±5%)
Average household size	2	100% (±5%)
Renter-occupied	2,653 (±276)	42% (±4%)
Average household size	2	100% (±4%)



<b>Year built (2018-2022)</b>		
2010 or later	356 (±127)	6% (±2%)
2000-2009	285 (±113)	5% (±2%)
1970-1999	1,050 (±199)	17% (±3%)
1940-1969	1,459 (±247)	23% (±4%)
1939 or earlier	3,173 (±288)	50% (±5%)
<b>Households (2018-2022)</b>		
Total households	6,007 (±337)	100% (±6%)
<b>Households by type (2018-2022)</b>		
Family households	3,405 (±327)	57% (±5%)
With children under 18 years	2,032 (±281)	34% (±5%)
Married-couple family households	1,880 (±258)	31% (±4%)
With children under 18 years.1	1,037 (±224)	17% (±4%)
Single-person family households	1,525 (±240)	25% (±4%)
With children under 18 years.2	995 (±186)	17% (±3%)
Nonfamily households	2,602 (±264)	43% (±4%)
Householder living alone	1,908 (±240)	32% (±4%)
65 years and over	688 (±148)	11% (±2%)
Households with one or more children under 18 years	2,042 (±282)	34% (±5%)
Households with one or more people 65 years and over	1,327 (±163)	22% (±3%)
<b>Year householder moved into unit (2018-2022)</b>		
Moved in 2010 or later	3,968 (±390)	66% (±7%)
Moved in 2000-2009	962 (±201)	16% (±3%)
Moved in 1990-1999	493 (±131)	8% (±2%)
Moved in 1989 or earlier	583 (±141)	10% (±2%)
<b>Cost-burdened households (2018-2022)</b>		
All households for which cost burden is calculated	5,955 (±342)	100% (±6%)
Cost-burdened households	2,452 (±324)	41% (±5%)
Owner households for which cost burden is calculated	3,351 (±288)	100% (±9%)
Cost-burdened owner households	933 (±191)	28% (±6%)
Renter households for which cost burden is calculated	2,604 (±280)	100% (±11%)
Cost-burdened renter households	1,519 (±262)	58% (±10%)

<b>Rent paid (2018-2022)</b>		
Households paying rent	2,625 (±276)	100% (±11%)
Median rent paid (2022 dollars)	1,197 (±274)	100% (±23%)
Transportation		
<b>Vehicles per household (2018-2022)</b>		
No vehicles	884 (±212)	15% (±4%)
1 vehicle available	2,036 (±253)	34% (±4%)
2 vehicles available	1,922 (±260)	32% (±4%)
3 or more vehicles available	1,165 (±229)	19% (±4%)

## Transportation

<b>Transportation to work (2018-2022)</b>		
Workers (16 years and older)	8,344 (±658)	100% (±8%)
Car, truck, or van (including passengers)	6,585 (±526)	79% (±6%)
Public transportation	556 (±171)	7% (±2%)
Walked, biked, worked at home, or other	1,203 (±330)	14% (±4%)
<b>Travel time to work (2018-2022)</b>		
Total workers age 16+ (not home based)	7,297 (±542)	100% (±7%)
Less than 10 minutes	556 (±177)	8% (±2%)
10-19 minutes	2,384 (±303)	33% (±4%)
20-29 minutes	1,842 (±279)	25% (±4%)
30 minutes or longer	2,515 (±352)	35% (±5%)

## Workforce

<b>Educational attainment (2018-2022)</b>		
Population (25 years and older)	11,326 (±798)	100% (±7%)
Less than high school	1,924 (±336)	17% (±3%)
High school diploma or GED	3,336 (±429)	30% (±4%)
Some college or associate's degree	3,508 (±423)	31% (±4%)
Bachelor's Degree	1,809 (±254)	16% (±2%)
Graduate or professional degree	750 (±173)	7% (±2%)
High school graduate or higher	9,402 (±676)	83% (±6%)
Bachelor's degree or higher	2,558 (±308)	23% (±3%)

<b>Working Adults (2018-2022)</b>		
Total civilian non-institutionalized population, age 18-64	11,148 (±844)	100% (±8%)
Working age adults who are employed	8,143 (±658)	73% (±6%)
Civilian labor force	8,808 (±728)	100% (±8%)
Unemployed	666 (±189)	8% (±2%)
<b>Total employed workers (LEHD) (2021)</b>		
Total employed workers	7,105	100%
<b>Worker age (2021)</b>		
Age 29 or younger	2,104	30%
Age 30 to 54	3,784	53%
Age 55 or older	1,217	17%
<b>Workers by earnings (2021)</b>		
\$15,000 per year or less	1,457	21%
\$15,001 to \$39,999 per year	2,554	36%
\$40,000 or more per year	3,095	44%
<b>Workers by industry of employment (2021)</b>		
Accommodation and food services	494	7%
Administration & support, waste management, and remediation	503	7%
Agriculture, forestry, fishing and hunting	40	1%
Arts, entertainment, and recreation	107	2%
Construction	233	3%
Educational services	542	8%
Finance and insurance	327	5%
Health care and social assistance	1,706	24%
Information	93	1%
Management of companies and enterprises	223	3%
Manufacturing	893	13%
Mining, quarrying, and oil and gas extraction	suppressed	suppressed
Other services (excluding public administration)	239	3%
Professional, scientific, and technical services	357	5%
Public administration	237	3%
Real estate and rental and leasing	73	1%
Retail trade	606	9%
Transportation and warehousing	171	2%
Utilities	13	0%
Wholesale trade	245	4%

<b>Workers by race (2021)</b>		
White alone	3,717	52%
Black or African American alone	1,128	16%
American Indian or Alaska Native alone	64	1%
Asian alone	1,943	27%
Native Hawaiian or Other Pacific Islander alone	suppressed	suppressed
Two or more race groups	249	4%
Hispanic or Latino (of any race)	701	10%
<b>Workers by educational attainment (2021)</b>		
Less than high school	735	10%
High school or equivalent, no college	1,178	17%
Some college or associate degree	1,539	22%
Bachelor's degree or advanced degree	1,549	22%

Source:

2018-2022 American Community Survey 5-year estimates, adjusted to fit current neighborhood boundaries using the 2020 Census counts. The 5-year estimates represent averages of data collected over that time period.

2021 Minnesota Department of Employment and Economic Development, Quarterly Census of Employment and Wages.



**SAINT PAUL**  
MINNESOTA



**Minnesota**  
Compass

## Community Profiles

Downtown Neighborhood, Saint Paul, Minnesota



### Downtown

<b>Total population</b>	8,743 ( $\pm 873$ )	100% ( $\pm 10\%$ )
<b>Sex (2018-2022)</b>		
Male	4,307 ( $\pm 509$ )	49% ( $\pm 6\%$ )
Female	4,435 ( $\pm 521$ )	51% ( $\pm 6\%$ )
<b>Age (2018-2022)</b>		
Under 5 years	341 ( $\pm 143$ )	4% ( $\pm 2\%$ )
5-9 years	suppressed	suppressed
10-14 years	suppressed	suppressed
15-17 years	160 ( $\pm 99$ )	2% ( $\pm 1\%$ )
18-24 years	872 ( $\pm 242$ )	10% ( $\pm 3\%$ )
25-34 years	2,451 ( $\pm 435$ )	28% ( $\pm 5\%$ )
35-44 years	1,208 ( $\pm 259$ )	14% ( $\pm 3\%$ )
45-54 years	1,050 ( $\pm 251$ )	12% ( $\pm 3\%$ )
55-64 years	1,074 ( $\pm 257$ )	12% ( $\pm 3\%$ )
65-74 years	914 ( $\pm 207$ )	10% ( $\pm 2\%$ )
75-84 years	345 ( $\pm 140$ )	4% ( $\pm 2\%$ )
85 years and older	suppressed	suppressed



<b>Race &amp; Ethnicity (2018-2022)</b>		
White	6,083 (±627)	70% (±7%)
Of Color	2,578 (±1,076)	29% (±12%)
Black or African American	845 (±329)	10% (±4%)
American Indian and Alaska Native	suppressed	suppressed
Asian	960 (±531)	11% (±6%)
Native Hawaiian and Other Pacific Islander	suppressed	suppressed
Other race	suppressed	suppressed
Two or more races	468 (±202)	5% (±2%)
Hispanic or Latino	287 (±160)	3% (±2%)
<b>Language spoken (2018-2022)</b>		
Population (5 years and older)	8,401 (±803)	100% (±10%)
English only	6,984 (±604)	83% (±7%)
Language other than English	suppressed	suppressed
Speak English less than "very well"	221 (±127)	3% (±2%)
<b>Disability status (2018-2022)</b>		
Total population for whom disability status is determined	8,693 (±869)	100% (±10%)
Population with a disability	1,097 (±249)	13% (±3%)
<b>Nativity (2018-2022)</b>		
Foreign born	1,037 (±391)	12% (±4%)
<b>Residence one year ago (2018-2022)</b>		
Population (1 year and older)	8,606 (±829)	100% (±10%)
Same residence	5,707 (±670)	66% (±8%)
Different residence in the U.S.	2,865 (±604)	33% (±7%)
Different residence outside the U.S.	suppressed	suppressed

## Quality of life

### Income and poverty

<b>Household income (2022 dollars) (2018-2022)</b>		
Total households	5,513 (±423)	100% (±8%)
Less than \$35,000	1,392 (±281)	25% (±5%)
\$35,000-\$49,999	541 (±161)	10% (±3%)
\$50,000-\$74,999	988 (±213)	18% (±4%)
\$75,000-\$99,999	695 (±193)	13% (±4%)
\$100,000 or more	1,897 (±334)	34% (±6%)
Median household income (2022 dollars)	\$64,243 (±\$23,106)	100% (±36%)

<b>Poverty (2018-2022)</b>		
All people for whom poverty status is determined	8,643 (±870)	100% (±10%)
With income below poverty	1,276 (±336)	15% (±4%)
With income 100-149 of poverty	694 (±315)	8% (±4%)
With income 150-199 of poverty	558 (±250)	7% (±3%)
With income 200 of poverty or higher	6,116 (±711)	71% (±8%)
17 years and younger (percent of people under age 18)	suppressed	suppressed
18-24 (percent of people age 18-24)	233 (±125)	27% (±15%)
25-34 (percent of people age 25-34)	181 (±94)	7% (±4%)
35-44 (percent of people age 35-44)	171 (±105)	14% (±9%)
45-54 (percent of people age 45-54)	207 (±99)	20% (±9%)
55-64 (percent of people age 55-64)	219 (±95)	21% (±9%)
18-64 (percent of people 18-64)	1,011 (±237)	15% (±4%)
65 years and older (percent of people age 65+)	163 (±86)	13% (±7%)

## Health coverage

<b>Health coverage (2018-2022)</b>	1,097 (±249)	13% (±3%)
Total population for whom health insurance coverage status is determined	8,693 (±869)	100% (±10%)
Total population age 65 and under for whom health insurance coverage status is determined	7,411 (±773)	85% (±9%)

## Housing

<b>Total housing units (2018-2022)</b>		
Total housing units	6,502 (±380)	100% (±6%)
<b>Owned and Rental Housing (2018-2022)</b>		
Vacant housing units	989 (±279)	15% (±4%)
Occupied housing units	5,513 (±423)	85% (±7%)
Average household size	1	100% (±2%)
Owner-occupied	1,474 (±234)	23% (±4%)
Average household size	1	100% (±5%)
Renter-occupied	4,039 (±376)	62% (±6%)
Average household size	1	100% (±2%)

<b>Year built (2018-2022)</b>		
2010 or later	431 (±201)	7% (±3%)
2000-2009	435 (±153)	7% (±2%)
1970-1999	2,154 (±310)	33% (±5%)
1940-1969	682 (±180)	10% (±3%)
1939 or earlier	2,800 (±356)	43% (±5%)
<b>Households (2018-2022)</b>		
Total households	5,513 (±423)	100% (±8%)
<b>Households by type (2018-2022)</b>		
Family households	1,459 (±298)	26% (±5%)
With children under 18 years	506 (±180)	9% (±3%)
Married-couple family households	1,028 (±246)	19% (±4%)
With children under 18 years.1	202 (±104)	4% (±2%)
Single-person family households	431 (±176)	8% (±3%)
With children under 18 years.2	304 (±148)	6% (±3%)
Nonfamily households	4,054 (±381)	74% (±7%)
Householder living alone	3,469 (±381)	63% (±7%)
65 years and over	787 (±181)	14% (±3%)
Households with one or more children under 18 years	547 (±181)	10% (±3%)
Households with one or more people 65 years and over	1,103 (±193)	20% (±4%)
<b>Year householder moved into unit (2018-2022)</b>		
Moved in 2010 or later	4,699 (±476)	85% (±9%)
Moved in 2000-2009	500 (±162)	9% (±3%)
Moved in 1990-1999	209 (±100)	4% (±2%)
Moved in 1989 or earlier	suppressed	suppressed
<b>Cost-burdened households (2018-2022)</b>		
All households for which cost burden is calculated	5,386 (±430)	100% (±8%)
Cost-burdened households	2,237 (±354)	42% (±7%)
Owner households for which cost burden is calculated	1,459 (±236)	100% (±16%)
Cost-burdened owner households	435 (±165)	30% (±11%)
Renter households for which cost burden is calculated	3,927 (±383)	100% (±10%)
Cost-burdened renter households	1,801 (±313)	46% (±8%)

<b>Rent paid (2018-2022)</b>		
Households paying rent	4,029 (±376)	100% (±9%)
Median rent paid (2022 dollars)	1,318 (±266)	100% (±20%)
Transportation		
<b>Vehicles per household (2018-2022)</b>		
No vehicles	1,325 (±243)	24% (±4%)
1 vehicle available	3,232 (±378)	59% (±7%)
2 vehicles available	819 (±232)	15% (±4%)
3 or more vehicles available	137 (±93)	3% (±2%)

## Transportation

<b>Transportation to work (2018-2022)</b>		
Workers (16 years and older)	5,572 (±692)	100% (±12%)
Car, truck, or van (including passengers)	3,175 (±554)	57% (±10%)
Public transportation	538 (±168)	10% (±3%)
Walked, biked, worked at home, or other	1,859 (±371)	33% (±7%)
<b>Travel time to work (2018-2022)</b>		
Total workers age 16+ (not home based)	4,337 (±617)	100% (±14%)
Less than 10 minutes	627 (±180)	15% (±4%)
10-19 minutes	1,540 (±332)	36% (±8%)
20-29 minutes	958 (±327)	22% (±8%)
30 minutes or longer	1,212 (±258)	28% (±6%)

## Workforce

<b>Educational attainment (2018-2022)</b>		
Population (25 years and older)	7,094 (±687)	100% (±10%)
Less than high school	339 (±151)	5% (±2%)
High school diploma or GED	781 (±224)	11% (±3%)
Some college or associate's degree	1,832 (±340)	26% (±5%)
Bachelor's Degree	2,406 (±386)	34% (±5%)
Graduate or professional degree	1,735 (±322)	25% (±5%)
High school graduate or higher	6,755 (±647)	95% (±9%)
Bachelor's degree or higher	4,142 (±502)	58% (±7%)

<b>Working Adults (2018-2022)</b>		
Total civilian non-institutionalized population, age 18-64	6,639 (±725)	100% (±11%)
Working age adults who are employed	5,316 (±676)	80% (±10%)
Civilian labor force	5,711 (±703)	100% (±12%)
Unemployed	396 (±174)	7% (±3%)
<b>Total employed workers (LEHD) (2021)</b>		
Total employed workers	4171	100%
<b>Worker age (2021)</b>		
Age 29 or younger	1274	31%
Age 30 to 54	2169	52%
Age 55 or older	728	17%
<b>Workers by earnings (2021)</b>		
\$15,000 per year or less	712	17%
\$15,001 to \$39,999 per year	971	23%
\$40,000 or more per year	2488	60%
<b>Workers by industry of employment (2021)</b>		
Accommodation and food services	238	6%
Administration & support, waste management, and remediation	258	6%
Agriculture, forestry, fishing and hunting	suppressed	suppressed
Arts, entertainment, and recreation	88	2%
Construction	128	3%
Educational services	363	9%
Finance and insurance	323	8%
Health care and social assistance	738	18%
Information	131	3%
Management of companies and enterprises	295	7%
Manufacturing	245	6%
Mining, quarrying, and oil and gas extraction	suppressed	suppressed
Other services (excluding public administration)	152	4%
Professional, scientific, and technical services	322	8%
Public administration	277	7%
Real estate and rental and leasing	58	1%
Retail trade	328	8%
Transportation and warehousing	96	2%
Utilities	suppressed	suppressed
Wholesale trade	122	3%



<b>Workers by race (2021)</b>		
White alone	3031	73%
Black or African American alone	628	15%
American Indian or Alaska Native alone	43	1%
Asian alone	334	8%
Native Hawaiian or Other Pacific Islander alone	suppressed	suppressed
Two or more race groups	132	3%
Hispanic or Latino (of any race)	215	5%
<b>Workers by educational attainment (2021)</b>		
Less than high school	274	7%
High school or equivalent, no college	669	16%
Some college or associate degree	954	23%
Bachelor's degree or advanced degree	999	24%

Source:

2018-2022 American Community Survey 5-year estimates, adjusted to fit current neighborhood boundaries using the 2020 Census counts. The 5-year estimates represent averages of data collected over that time period.

2021 Minnesota Department of Employment and Economic Development, Quarterly Census of Employment and Wages.



**SAINT PAUL**  
MINNESOTA



**Minnesota**  
Compass

## Community Profiles

Frogtown/Thomas-Dale Neighborhood, Saint Paul, Minnesota



### Frogtown/Thomas-Dale

<b>Total population</b>	15,507 ( $\pm 1,375$ )	100% ( $\pm 9\%$ )
<b>Sex (2018-2022)</b>		
Male	7,741 ( $\pm 787$ )	50% ( $\pm 5\%$ )
Female	7,767 ( $\pm 780$ )	50% ( $\pm 5\%$ )
<b>Age (2018-2022)</b>		
Under 5 years	1,240 ( $\pm 317$ )	8% ( $\pm 2\%$ )
5-9 years	1,268 ( $\pm 322$ )	8% ( $\pm 2\%$ )
10-14 years	1,044 ( $\pm 203$ )	7% ( $\pm 1\%$ )
15-17 years	563 ( $\pm 148$ )	4% ( $\pm 1\%$ )
18-24 years	2,278 ( $\pm 408$ )	15% ( $\pm 3\%$ )
25-34 years	2,703 ( $\pm 389$ )	17% ( $\pm 3\%$ )
35-44 years	2,181 ( $\pm 368$ )	14% ( $\pm 2\%$ )
45-54 years	2,073 ( $\pm 313$ )	13% ( $\pm 2\%$ )
55-64 years	1,076 ( $\pm 171$ )	7% ( $\pm 1\%$ )
65-74 years	791 ( $\pm 168$ )	5% ( $\pm 1\%$ )
75-84 years	224 ( $\pm 86$ )	1% ( $\pm 1\%$ )
85 years and older	66 ( $\pm 46$ )	0% ( $\pm 0\%$ )

<b>Race &amp; Ethnicity (2018-2022)</b>		
White	3,879 (±497)	25% (±3%)
Of Color	11,132 (±1,477)	72% (±10%)
Black or African American	3,819 (±825)	25% (±5%)
American Indian and Alaska Native	suppressed	suppressed
Asian	4,463 (±751)	29% (±5%)
Native Hawaiian and Other Pacific Islander	suppressed	suppressed
Other race	suppressed	suppressed
Two or more races	1,179 (±432)	8% (±3%)
Hispanic or Latino	2,086 (±878)	13% (±6%)
<b>Language spoken (2018-2022)</b>		
Population (5 years and older)	14,268 (±1,258)	100% (±9%)
English only	8,205 (±987)	58% (±7%)
Language other than English	6,062 (±1,599)	42% (±11%)
Speak English less than "very well"	3,322 (±637)	23% (±4%)
<b>Disability status (2018-2022)</b>		
Total population for whom disability status is determined	15,456 (±1,375)	100% (±9%)
Population with a disability	2,600 (±438)	17% (±3%)
<b>Nativity (2018-2022)</b>		
Foreign born	4,517 (±694)	29% (±4%)
<b>Residence one year ago (2018-2022)</b>		
Population (1 year and older)	15,212 (±1,355)	100% (±9%)
Same residence	12,902 (±1,315)	85% (±9%)
Different residence in the U.S.	2,165 (±635)	14% (±4%)
Different residence outside the U.S.	suppressed	suppressed

## Quality of life

### Income and poverty

<b>Household income (2022 dollars) (2018-2022)</b>		
Total households	5,194 (±367)	100% (±7%)
Less than \$35,000	1,819 (±325)	35% (±6%)
\$35,000-\$49,999	787 (±206)	15% (±4%)
\$50,000-\$74,999	1,042 (±253)	20% (±5%)
\$75,000-\$99,999	551 (±126)	11% (±2%)
\$100,000 or more	995 (±174)	19% (±3%)
Median household income (2022 dollars)	\$51,692 (±\$31,001)	100% (±60%)

<b>Poverty (2018-2022)</b>		
All people for whom poverty status is determined	15,438 (±1,375)	100% (±9%)
With income below poverty	3,689 (±781)	24% (±5%)
With income 100-149 of poverty	3,217 (±1,014)	21% (±7%)
With income 150-199 of poverty	1,399 (±542)	9% (±4%)
With income 200 of poverty or higher	7,132 (±821)	46% (±5%)
17 years and younger (percent of people under age 18)	1,268 (±266)	31% (±7%)
18-24 (percent of people age 18-24)	538 (±200)	24% (±9%)
25-34 (percent of people age 25-34)	404 (±119)	15% (±4%)
35-44 (percent of people age 35-44)	500 (±139)	23% (±6%)
45-54 (percent of people age 45-54)	610 (±193)	29% (±9%)
55-64 (percent of people age 55-64)	179 (±60)	17% (±6%)
18-64 (percent of people 18-64)	2,231 (±340)	22% (±3%)
65 years and older (percent of people age 65+)	190 (±91)	18% (±9%)

## Health coverage

<b>Health coverage (2018-2022)</b>	2,600 (±438)	17% (±3%)
Total population for whom health insurance coverage status is determined	15,456 (±1,375)	100% (±9%)
Total population age 65 and under for whom health insurance coverage status is determined	14,419 (±1,145)	93% (±7%)

## Housing

<b>Total housing units (2018-2022)</b>		
Total housing units	5,642 (±357)	100% (±6%)
<b>Owned and Rental Housing (2018-2022)</b>		
Vacant housing units	448 (±131)	8% (±2%)
Occupied housing units	5,194 (±367)	92% (±7%)
Average household size	3	100% (±3%)
Owner-occupied	2,426 (±285)	43% (±5%)
Average household size	3	100% (±4%)
Renter-occupied	2,768 (±332)	49% (±6%)
Average household size	3	100% (±4%)

<b>Year built (2018-2022)</b>		
2010 or later	399 (±200)	7% (±4%)
2000-2009	207 (±117)	4% (±2%)
1970-1999	1,161 (±222)	21% (±4%)
1940-1969	1,274 (±244)	23% (±4%)
1939 or earlier	2,601 (±285)	46% (±5%)
<b>Households (2018-2022)</b>		
Total households	5,194 (±367)	100% (±7%)
<b>Households by type (2018-2022)</b>		
Family households	3,052 (±298)	59% (±6%)
With children under 18 years	1,975 (±281)	38% (±5%)
Married-couple family households	1,567 (±227)	30% (±4%)
With children under 18 years.1	994 (±203)	19% (±4%)
Single-person family households	1,485 (±239)	29% (±5%)
With children under 18 years.2	981 (±231)	19% (±4%)
Nonfamily households	2,142 (±287)	41% (±6%)
Householder living alone	1,643 (±264)	32% (±5%)
65 years and over	362 (±97)	7% (±2%)
Households with one or more children under 18 years	1,983 (±281)	38% (±5%)
Households with one or more people 65 years and over	804 (±121)	15% (±2%)
<b>Year householder moved into unit (2018-2022)</b>		
Moved in 2010 or later	3,642 (±466)	70% (±9%)
Moved in 2000-2009	697 (±158)	13% (±3%)
Moved in 1990-1999	474 (±104)	9% (±2%)
Moved in 1989 or earlier	381 (±117)	7% (±2%)
<b>Cost-burdened households (2018-2022)</b>		
All households for which cost burden is calculated	5,126 (±372)	100% (±7%)
Cost-burdened households	2,168 (±362)	42% (±7%)
Owner households for which cost burden is calculated	2,418 (±286)	100% (±12%)
Cost-burdened owner households	668 (±198)	28% (±8%)
Renter households for which cost burden is calculated	2,708 (±336)	100% (±12%)
Cost-burdened renter households	1,501 (±303)	55% (±11%)

<b>Rent paid (2018-2022)</b>		
Households paying rent	2,740 (±333)	100% (±12%)
Median rent paid (2022 dollars)	1,041 (±297)	100% (±29%)
Transportation		
<b>Vehicles per household (2018-2022)</b>		
No vehicles	921 (±222)	18% (±4%)
1 vehicle available	2,163 (±335)	42% (±7%)
2 vehicles available	1,307 (±236)	25% (±5%)
3 or more vehicles available	803 (±179)	16% (±3%)

## Transportation

<b>Transportation to work (2018-2022)</b>		
Workers (16 years and older)	6,819 (±593)	100% (±9%)
Car, truck, or van (including passengers)	5,045 (±534)	74% (±8%)
Public transportation	907 (±258)	13% (±4%)
Walked, biked, worked at home, or other	867 (±233)	13% (±3%)
<b>Travel time to work (2018-2022)</b>		
Total workers age 16+ (not home based)	6,211 (±566)	100% (±9%)
Less than 10 minutes	698 (±194)	11% (±3%)
10-19 minutes	1,766 (±315)	28% (±5%)
20-29 minutes	1,962 (±304)	32% (±5%)
30 minutes or longer	1,785 (±314)	29% (±5%)

## Workforce

<b>Educational attainment (2018-2022)</b>		
Population (25 years and older)	9,114 (±714)	100% (±8%)
Less than high school	1,916 (±287)	21% (±3%)
High school diploma or GED	2,468 (±350)	27% (±4%)
Some college or associate's degree	2,772 (±407)	30% (±5%)
Bachelor's Degree	1,122 (±203)	12% (±2%)
Graduate or professional degree	837 (±206)	9% (±2%)
High school graduate or higher	7,198 (±610)	79% (±7%)
Bachelor's degree or higher	1,958 (±289)	22% (±3%)



<b>Working Adults (2018-2022)</b>		
Total civilian non-institutionalized population, age 18-64	10,311 (±979)	100% (±10%)
Working age adults who are employed	6,753 (±600)	66% (±6%)
Civilian labor force	7,222 (±636)	100% (±9%)
Unemployed	468 (±165)	7% (±2%)
<b>Total employed workers (LEHD) (2021)</b>		
Total employed workers	5640	100%
<b>Worker age (2021)</b>		
Age 29 or younger	1711	30%
Age 30 to 54	3055	54%
Age 55 or older	874	16%
<b>Workers by earnings (2021)</b>		
\$15,000 per year or less	1262	22%
\$15,001 to \$39,999 per year	2140	38%
\$40,000 or more per year	2238	40%
<b>Workers by industry of employment (2021)</b>		
Accommodation and food services	433	8%
Administration & support, waste management, and remediation	440	8%
Agriculture, forestry, fishing and hunting	17	0%
Arts, entertainment, and recreation	51	1%
Construction	132	2%
Educational services	461	8%
Finance and insurance	212	4%
Health care and social assistance	1463	26%
Information	73	1%
Management of companies and enterprises	138	3%
Manufacturing	605	11%
Mining, quarrying, and oil and gas extraction	suppressed	suppressed
Other services (excluding public administration)	198	4%
Professional, scientific, and technical services	272	5%
Public administration	210	4%
Real estate and rental and leasing	52	1%
Retail trade	506	9%
Transportation and warehousing	182	3%
Utilities	suppressed	suppressed
Wholesale trade	188	3%

<b>Workers by race (2021)</b>		
White alone	2443	43%
Black or African American alone	1465	26%
American Indian or Alaska Native alone	50	1%
Asian alone	1467	26%
Native Hawaiian or Other Pacific Islander alone	11	0%
Two or more race groups	205	4%
Hispanic or Latino (of any race)	476	8%
<b>Workers by educational attainment (2021)</b>		
Less than high school	591	11%
High school or equivalent, no college	971	17%
Some college or associate degree	1223	22%
Bachelor's degree or advanced degree	1145	20%

Source:

2018-2022 American Community Survey 5-year estimates, adjusted to fit current neighborhood boundaries using the 2020 Census counts. The 5-year estimates represent averages of data collected over that time period.

2021 Minnesota Department of Employment and Economic Development, Quarterly Census of Employment and Wages.



**SAINT PAUL**  
MINNESOTA



**Minnesota**  
Compass

## Community Profiles

Greater East Side Neighborhood, Saint Paul, Minnesota



### Greater East Side

<b>Total population</b>	32,130 (±2,006)	100% (±6%)
<b>Sex (2018-2022)</b>		
Male	14,916 (±1,075)	46% (±3%)
Female	17,214 (±1,320)	54% (±4%)
<b>Age (2018-2022)</b>		
Under 5 years	3,268 (±536)	10% (±2%)
5-9 years	2,632 (±426)	8% (±1%)
10-14 years	2,979 (±539)	9% (±2%)
15-17 years	1,485 (±357)	5% (±1%)
18-24 years	2,653 (±373)	8% (±1%)
25-34 years	5,799 (±617)	18% (±2%)
35-44 years	4,671 (±536)	15% (±2%)
45-54 years	2,791 (±423)	9% (±1%)
55-64 years	2,994 (±392)	9% (±1%)
65-74 years	1,869 (±398)	6% (±1%)
75-84 years	744 (±162)	2% (±1%)
85 years and older	246 (±104)	1% (±0%)

<b>Race &amp; Ethnicity (2018-2022)</b>		
White	10,095 (±938)	31% (±3%)
Of Color	20,187 (±2,362)	63% (±7%)
Black or African American	4,379 (±1,092)	14% (±3%)
American Indian and Alaska Native	67 (±41)	0% (±0%)
Asian	10,530 (±1,290)	33% (±4%)
Native Hawaiian and Other Pacific Islander	suppressed	suppressed
Other race	suppressed	suppressed
Two or more races	2,730 (±918)	9% (±3%)
Hispanic or Latino	4,313 (±951)	13% (±3%)
<b>Language spoken (2018-2022)</b>		
Population (5 years and older)	28,862 (±1,726)	100% (±6%)
English only	16,465 (±1,427)	57% (±5%)
Language other than English	12,397 (±2,239)	43% (±8%)
Speak English less than "very well"	6,321 (±964)	22% (±3%)
<b>Disability status (2018-2022)</b>		
Total population for whom disability status is determined	32,130 (±2,006)	100% (±6%)
Population with a disability	3,399 (±452)	11% (±1%)
<b>Nativity (2018-2022)</b>		
Foreign born	8,948 (±1,359)	28% (±4%)
<b>Residence one year ago (2018-2022)</b>		
Population (1 year and older)	31,642 (±1,915)	100% (±6%)
Same residence	27,723 (±1,911)	88% (±6%)
Different residence in the U.S.	3,559 (±750)	11% (±2%)
Different residence outside the U.S.	360 (±241)	1% (±1%)

## Quality of life

### Income and poverty

<b>Household income (2022 dollars) (2018-2022)</b>		
Total households	10,315 (±524)	100% (±5%)
Less than \$35,000	2,534 (±418)	25% (±4%)
\$35,000-\$49,999	1,224 (±302)	12% (±3%)
\$50,000-\$74,999	1,997 (±348)	19% (±3%)
\$75,000-\$99,999	1,206 (±254)	12% (±3%)
\$100,000 or more	3,353 (±450)	33% (±4%)
Median household income (2022 dollars)	suppressed	suppressed

<b>Poverty (2018-2022)</b>		
All people for whom poverty status is determined	32,070 (±2,003)	100% (±6%)
With income below poverty	5,646 (±1,401)	18% (±4%)
With income 100-149 of poverty	3,635 (±1,213)	11% (±4%)
With income 150-199 of poverty	3,297 (±852)	10% (±3%)
With income 200 of poverty or higher	19,492 (±1,559)	61% (±5%)
17 years and younger (percent of people under age 18)	2,281 (±610)	22% (±6%)
18-24 (percent of people age 18-24)	761 (±195)	29% (±7%)
25-34 (percent of people age 25-34)	657 (±205)	11% (±4%)
35-44 (percent of people age 35-44)	583 (±217)	13% (±5%)
45-54 (percent of people age 45-54)	548 (±208)	20% (±8%)
55-64 (percent of people age 55-64)	493 (±154)	17% (±5%)
18-64 (percent of people 18-64)	3,041 (±442)	16% (±2%)
65 years and older (percent of people age 65+)	323 (±120)	11% (±4%)

## Health coverage

<b>Health coverage (2018-2022)</b>	3,399 (±452)	11% (±1%)
Total population for whom health insurance coverage status is determined	32,130 (±2,006)	100% (±6%)
Total population age 65 and under for whom health insurance coverage status is determined	29,271 (±1,589)	91% (±5%)

## Housing

<b>Total housing units (2018-2022)</b>		
Total housing units	10,757 (±510)	100% (±5%)
<b>Owned and Rental Housing (2018-2022)</b>		
Vacant housing units	442 (±214)	4% (±2%)
Occupied housing units	10,315 (±524)	96% (±5%)
Average household size	3	100% (±2%)
Owner-occupied	5,858 (±412)	54% (±4%)
Average household size	3	100% (±3%)
Renter-occupied	4,457 (±465)	41% (±4%)
Average household size	3	100% (±6%)

<b>Year built (2018-2022)</b>		
2010 or later	suppressed	suppressed
2000-2009	773 (±279)	7% (±3%)
1970-1999	3,046 (±451)	28% (±4%)
1940-1969	4,931 (±467)	46% (±4%)
1939 or earlier	1,885 (±329)	18% (±3%)
<b>Households (2018-2022)</b>		
Total households	10,315 (±524)	100% (±5%)
<b>Households by type (2018-2022)</b>		
Family households	6,941 (±496)	67% (±5%)
With children under 18 years	4,280 (±405)	41% (±4%)
Married-couple family households	3,885 (±457)	38% (±4%)
With children under 18 years.1	2,266 (±357)	22% (±3%)
Single-person family households	3,055 (±423)	30% (±4%)
With children under 18 years.2	2,014 (±342)	20% (±3%)
Nonfamily households	3,374 (±438)	33% (±4%)
Householder living alone	2,731 (±414)	26% (±4%)
65 years and over	739 (±189)	7% (±2%)
Households with one or more children under 18 years	4,299 (±406)	42% (±4%)
Households with one or more people 65 years and over	2,275 (±361)	22% (±4%)
<b>Year householder moved into unit (2018-2022)</b>		
Moved in 2010 or later	7,198 (±674)	70% (±7%)
Moved in 2000-2009	1,358 (±253)	13% (±3%)
Moved in 1990-1999	793 (±164)	8% (±2%)
Moved in 1989 or earlier	965 (±250)	9% (±2%)
<b>Cost-burdened households (2018-2022)</b>		
All households for which cost burden is calculated	10,122 (±538)	100% (±5%)
Cost-burdened households	3,182 (±481)	31% (±5%)
Owner households for which cost burden is calculated	5,822 (±413)	100% (±7%)
Cost-burdened owner households	1,217 (±236)	21% (±4%)
Renter households for which cost burden is calculated	4,299 (±479)	100% (±11%)
Cost-burdened renter households	1,966 (±419)	46% (±10%)



<b>Rent paid (2018-2022)</b>		
Households paying rent	4,338 (±466)	100% (±11%)
Median rent paid (2022 dollars)	1,209 (±310)	100% (±26%)
Transportation		
<b>Vehicles per household (2018-2022)</b>		
No vehicles	1,326 (±324)	13% (±3%)
1 vehicle available	3,676 (±463)	36% (±5%)
2 vehicles available	3,310 (±427)	32% (±4%)
3 or more vehicles available	2,003 (±296)	19% (±3%)

## Transportation

<b>Transportation to work (2018-2022)</b>		
Workers (16 years and older)	15,404 (±1,050)	100% (±7%)
Car, truck, or van (including passengers)	12,682 (±988)	82% (±6%)
Public transportation	1,095 (±338)	7% (±2%)
Walked, biked, worked at home, or other	1,627 (±336)	11% (±2%)
<b>Travel time to work (2018-2022)</b>		
Total workers age 16+ (not home based)	14,169 (±1,037)	100% (±7%)
Less than 10 minutes	947 (±291)	7% (±2%)
10-19 minutes	3,580 (±529)	25% (±4%)
20-29 minutes	3,978 (±663)	28% (±5%)
30 minutes or longer	5,665 (±662)	40% (±5%)

## Workforce

<b>Educational attainment (2018-2022)</b>		
Population (25 years and older)	19,113 (±1,087)	100% (±6%)
Less than high school	3,364 (±473)	18% (±3%)
High school diploma or GED	6,198 (±661)	32% (±4%)
Some college or associate's degree	5,587 (±540)	29% (±3%)
Bachelor's Degree	2,698 (±385)	14% (±2%)
Graduate or professional degree	1,265 (±356)	7% (±2%)
High school graduate or higher	15,749 (±1,001)	82% (±5%)
Bachelor's degree or higher	3,963 (±525)	21% (±3%)

<b>Working Adults (2018-2022)</b>		
Total civilian non-institutionalized population, age 18-64	18,908 (±1,019)	100% (±5%)
Working age adults who are employed	14,478 (±909)	77% (±5%)
Civilian labor force	15,095 (±910)	100% (±6%)
Unemployed	618 (±214)	4% (±1%)
<b>Total employed workers (LEHD) (2021)</b>		
Total employed workers	12457	100%
<b>Worker age (2021)</b>		
Age 29 or younger	3724	30%
Age 30 to 54	6739	54%
Age 55 or older	1994	16%
<b>Workers by earnings (2021)</b>		
\$15,000 per year or less	2483	20%
\$15,001 to \$39,999 per year	4260	34%
\$40,000 or more per year	5714	46%
<b>Workers by industry of employment (2021)</b>		
Accommodation and food services	832	7%
Administration & support, waste management, and remediation	863	7%
Agriculture, forestry, fishing and hunting	41	0%
Arts, entertainment, and recreation	126	1%
Construction	400	3%
Educational services	796	6%
Finance and insurance	558	5%
Health care and social assistance	2969	24%
Information	135	1%
Management of companies and enterprises	399	3%
Manufacturing	1803	15%
Mining, quarrying, and oil and gas extraction	suppressed	suppressed
Other services (excluding public administration)	381	3%
Professional, scientific, and technical services	541	4%
Public administration	429	3%
Real estate and rental and leasing	135	1%
Retail trade	1216	10%
Transportation and warehousing	333	3%
Utilities	23	0%
Wholesale trade	474	4%

<b>Workers by race (2021)</b>		
White alone	6053	49%
Black or African American alone	1689	14%
American Indian or Alaska Native alone	113	1%
Asian alone	4250	34%
Native Hawaiian or Other Pacific Islander alone	15	0%
Two or more race groups	338	3%
Hispanic or Latino (of any race)	1181	10%
<b>Workers by educational attainment (2021)</b>		
Less than high school	1273	10%
High school or equivalent, no college	2094	17%
Some college or associate degree	2653	21%
Bachelor's degree or advanced degree	2714	22%

Source:

2018-2022 American Community Survey 5-year estimates, adjusted to fit current neighborhood boundaries using the 2020 Census counts. The 5-year estimates represent averages of data collected over that time period.

2021 Minnesota Department of Employment and Economic Development, Quarterly Census of Employment and Wages.



**SAINT PAUL**  
MINNESOTA



**Minnesota**  
Compass

## Community Profiles

North End Neighborhood, Saint Paul, Minnesota



### North End

<b>Total population</b>	23,719 (±1,514)	100% (±6%)
<b>Sex (2018-2022)</b>		
Male	12,049 (±973)	51% (±4%)
Female	11,670 (±844)	49% (±4%)
<b>Age (2018-2022)</b>		
Under 5 years	1,667 (±321)	7% (±1%)
5-9 years	2,175 (±369)	9% (±2%)
10-14 years	2,173 (±379)	9% (±2%)
15-17 years	1,507 (±330)	6% (±1%)
18-24 years	2,410 (±401)	10% (±2%)
25-34 years	4,089 (±509)	17% (±2%)
35-44 years	3,353 (±463)	14% (±2%)
45-54 years	2,297 (±418)	10% (±2%)
55-64 years	2,412 (±349)	10% (±1%)
65-74 years	1,231 (±233)	5% (±1%)
75-84 years	205 (±83)	1% (±0%)
85 years and older	200 (±83)	1% (±0%)

<b>Race &amp; Ethnicity (2018-2022)</b>		
White	6,707 (±689)	28% (±3%)
Of Color	16,625 (±1,682)	70% (±7%)
Black or African American	5,320 (±993)	22% (±4%)
American Indian and Alaska Native	suppressed	suppressed
Asian	8,501 (±1,132)	36% (±5%)
Native Hawaiian and Other Pacific Islander	suppressed	suppressed
Other race	suppressed	suppressed
Two or more races	1,383 (±572)	6% (±2%)
Hispanic or Latino	1,736 (±508)	7% (±2%)
<b>Language spoken (2018-2022)</b>		
Population (5 years and older)	22,052 (±1,412)	100% (±6%)
English only	12,279 (±1,089)	56% (±5%)
Language other than English	9,773 (±1,783)	44% (±8%)
Speak English less than "very well"	5,673 (±862)	26% (±4%)
<b>Disability status (2018-2022)</b>		
Total population for whom disability status is determined	23,632 (±1,515)	100% (±6%)
Population with a disability	3,274 (±443)	14% (±2%)
<b>Nativity (2018-2022)</b>		
Foreign born	6,949 (±1,069)	29% (±5%)
<b>Residence one year ago (2018-2022)</b>		
Population (1 year and older)	23,388 (±1,485)	100% (±6%)
Same residence	19,380 (±1,544)	83% (±7%)
Different residence in the U.S.	3,946 (±995)	17% (±4%)
Different residence outside the U.S.	suppressed	suppressed

## Quality of life

### Income and poverty

<b>Household income (2022 dollars) (2018-2022)</b>		
Total households	7,995 (±458)	100% (±6%)
Less than \$35,000	2,432 (±393)	30% (±5%)
\$35,000-\$49,999	1,113 (±279)	14% (±4%)
\$50,000-\$74,999	1,669 (±349)	21% (±4%)
\$75,000-\$99,999	1,261 (±254)	16% (±3%)
\$100,000 or more	1,520 (±302)	19% (±4%)
Median household income (2022 dollars)	\$57,050 (±\$24,128)	100% (±42%)

<b>Poverty (2018-2022)</b>		
All people for whom poverty status is determined	23,325 (±1,468)	100% (±6%)
With income below poverty	5,288 (±1,020)	23% (±4%)
With income 100-149 of poverty	3,165 (±821)	14% (±4%)
With income 150-199 of poverty	3,579 (±995)	15% (±4%)
With income 200 of poverty or higher	11,293 (±1,405)	48% (±6%)
17 years and younger (percent of people under age 18)	2,224 (±421)	31% (±6%)
18-24 (percent of people age 18-24)	576 (±163)	24% (±7%)
25-34 (percent of people age 25-34)	749 (±217)	18% (±5%)
35-44 (percent of people age 35-44)	589 (±157)	18% (±5%)
45-54 (percent of people age 45-54)	275 (±123)	12% (±5%)
55-64 (percent of people age 55-64)	493 (±167)	21% (±7%)
18-64 (percent of people 18-64)	2,682 (±376)	18% (±3%)
65 years and older (percent of people age 65+)	382 (±132)	24% (±8%)

## Health coverage

<b>Health coverage (2018-2022)</b>	3,274 (±443)	14% (±2%)
Total population for whom health insurance coverage status is determined	23,632 (±1,515)	100% (±6%)
Total population age 65 and under for whom health insurance coverage status is determined	22,069 (±1,290)	93% (±5%)

## Housing

<b>Total housing units (2018-2022)</b>		
Total housing units	8,579 (±431)	100% (±5%)
<b>Owned and Rental Housing (2018-2022)</b>		
Vacant housing units	584 (±189)	7% (±2%)
Occupied housing units	7,995 (±458)	93% (±5%)
Average household size	3	100% (±2%)
Owner-occupied	3,954 (±409)	46% (±5%)
Average household size	3	100% (±3%)
Renter-occupied	4,041 (±410)	47% (±5%)
Average household size	3	100% (±2%)

<b>Year built (2018-2022)</b>		
2010 or later	suppressed	suppressed
2000-2009	448 (±163)	5% (±2%)
1970-1999	3,008 (±433)	35% (±5%)
1940-1969	2,563 (±388)	30% (±5%)
1939 or earlier	2,365 (±277)	28% (±3%)
<b>Households (2018-2022)</b>		
Total households	7,995 (±458)	100% (±6%)
<b>Households by type (2018-2022)</b>		
Family households	4,679 (±402)	59% (±5%)
With children under 18 years	3,072 (±330)	38% (±4%)
Married-couple family households	2,475 (±330)	31% (±4%)
With children under 18 years.1	1,536 (±264)	19% (±3%)
Single-person family households	2,204 (±347)	28% (±4%)
With children under 18 years.2	1,536 (±300)	19% (±4%)
Nonfamily households	3,316 (±350)	41% (±4%)
Householder living alone	2,351 (±322)	29% (±4%)
65 years and over	574 (±164)	7% (±2%)
Households with one or more children under 18 years	3,081 (±333)	39% (±4%)
Households with one or more people 65 years and over	1,310 (±204)	16% (±3%)
<b>Year householder moved into unit (2018-2022)</b>		
Moved in 2010 or later	6,033 (±617)	76% (±8%)
Moved in 2000-2009	1,023 (±212)	13% (±3%)
Moved in 1990-1999	483 (±144)	6% (±2%)
Moved in 1989 or earlier	456 (±101)	6% (±1%)
<b>Cost-burdened households (2018-2022)</b>		
All households for which cost burden is calculated	7,823 (±472)	100% (±6%)
Cost-burdened households	3,296 (±454)	42% (±6%)
Owner households for which cost burden is calculated	3,941 (±411)	100% (±10%)
Cost-burdened owner households	1,024 (±228)	26% (±6%)
Renter households for which cost burden is calculated	3,882 (±425)	100% (±11%)
Cost-burdened renter households	2,272 (±393)	59% (±10%)



<b>Rent paid (2018-2022)</b>		
Households paying rent	3,954 (±403)	100% (±10%)
Median rent paid (2022 dollars)	1,112 (±334)	100% (±30%)
Transportation		
<b>Vehicles per household (2018-2022)</b>		
No vehicles	1,429 (±303)	18% (±4%)
1 vehicle available	2,994 (±413)	37% (±5%)
2 vehicles available	2,431 (±396)	30% (±5%)
3 or more vehicles available	1,141 (±236)	14% (±3%)

## Transportation

<b>Transportation to work (2018-2022)</b>		
Workers (16 years and older)	10,538 (±854)	100% (±8%)
Car, truck, or van (including passengers)	8,035 (±727)	76% (±7%)
Public transportation	1,090 (±280)	10% (±3%)
Walked, biked, worked at home, or other	1,413 (±393)	13% (±4%)
<b>Travel time to work (2018-2022)</b>		
Total workers age 16+ (not home based)	9,526 (±786)	100% (±8%)
Less than 10 minutes	574 (±166)	6% (±2%)
10-19 minutes	3,301 (±492)	35% (±5%)
20-29 minutes	2,509 (±367)	26% (±4%)
30 minutes or longer	3,142 (±460)	33% (±5%)

## Workforce

<b>Educational attainment (2018-2022)</b>		
Population (25 years and older)	13,787 (±911)	100% (±7%)
Less than high school	3,305 (±502)	24% (±4%)
High school diploma or GED	3,751 (±441)	27% (±3%)
Some college or associate's degree	4,223 (±537)	31% (±4%)
Bachelor's Degree	1,637 (±262)	12% (±2%)
Graduate or professional degree	871 (±217)	6% (±2%)
High school graduate or higher	10,482 (±774)	76% (±6%)
Bachelor's degree or higher	2,508 (±340)	18% (±3%)

<b>Working Adults (2018-2022)</b>		
Total civilian non-institutionalized population, age 18-64	14,554 (±1,070)	100% (±7%)
Working age adults who are employed	10,506 (±896)	72% (±6%)
Civilian labor force	11,203 (±937)	100% (±8%)
Unemployed	697 (±286)	6% (±3%)
<b>Total employed workers (LEHD) (2021)</b>		
Total employed workers	9200	100%
<b>Worker age (2021)</b>		
Age 29 or younger	2681	29%
Age 30 to 54	4988	54%
Age 55 or older	1531	17%
<b>Workers by earnings (2021)</b>		
\$15,000 per year or less	1919	21%
\$15,001 to \$39,999 per year	3559	39%
\$40,000 or more per year	3722	41%
<b>Workers by industry of employment (2021)</b>		
Accommodation and food services	661	7%
Administration & support, waste management, and remediation	708	8%
Agriculture, forestry, fishing and hunting	21	0%
Arts, entertainment, and recreation	107	1%
Construction	250	3%
Educational services	720	8%
Finance and insurance	386	4%
Health care and social assistance	2334	25%
Information	115	1%
Management of companies and enterprises	254	3%
Manufacturing	1104	12%
Mining, quarrying, and oil and gas extraction	suppressed	suppressed
Other services (excluding public administration)	315	3%
Professional, scientific, and technical services	442	5%
Public administration	296	3%
Real estate and rental and leasing	111	1%
Retail trade	810	9%
Transportation and warehousing	247	3%
Utilities	suppressed	suppressed
Wholesale trade	311	3%

<b>Workers by race (2021)</b>		
White alone	4237	46%
Black or African American alone	2017	22%
American Indian or Alaska Native alone	82	1%
Asian alone	2532	28%
Native Hawaiian or Other Pacific Islander alone	suppressed	suppressed
Two or more race groups	324	4%
Hispanic or Latino (of any race)	778	9%
<b>Workers by educational attainment (2021)</b>		
Less than high school	970	11%
High school or equivalent, no college	1607	18%
Some college or associate degree	1992	22%
Bachelor's degree or advanced degree	1950	21%

Source:

2018-2022 American Community Survey 5-year estimates, adjusted to fit current neighborhood boundaries using the 2020 Census counts. The 5-year estimates represent averages of data collected over that time period.

2021 Minnesota Department of Employment and Economic Development, Quarterly Census of Employment and Wages.



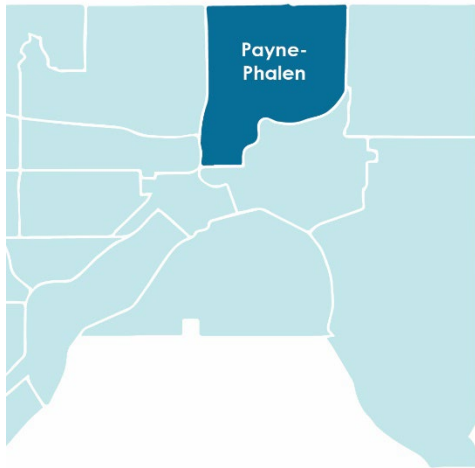
**SAINT PAUL**  
MINNESOTA



**Minnesota**  
Compass

## Community Profiles

Payne-Phalen Neighborhood, Saint Paul, Minnesota



### Payne-Phalen

<b>Total population</b>	32,414 (±1,951)	100% (±6%)
<b>Sex (2018-2022)</b>		
Male	16,690 (±1,100)	51% (±3%)
Female	15,724 (±1,140)	49% (±4%)
<b>Age (2018-2022)</b>		
Under 5 years	2,839 (±421)	9% (±1%)
5-9 years	2,781 (±408)	9% (±1%)
10-14 years	3,146 (±562)	10% (±2%)
15-17 years	1,316 (±283)	4% (±1%)
18-24 years	2,820 (±376)	9% (±1%)
25-34 years	5,750 (±561)	18% (±2%)
35-44 years	4,273 (±484)	13% (±1%)
45-54 years	3,540 (±438)	11% (±1%)
55-64 years	3,191 (±417)	10% (±1%)
65-74 years	1,771 (±283)	5% (±1%)
75-84 years	696 (±207)	2% (±1%)
85 years and older	291 (±156)	1% (±0%)

<b>Race &amp; Ethnicity (2018-2022)</b>		
White	8,966 (±818)	28% (±3%)
Of Color	22,293 (±2,156)	69% (±7%)
Black or African American	4,557 (±914)	14% (±3%)
American Indian and Alaska Native	659 (±329)	2% (±1%)
Asian	13,771 (±1,680)	42% (±5%)
Native Hawaiian and Other Pacific Islander	suppressed	suppressed
Other race	suppressed	suppressed
Two or more races	1,352 (±397)	4% (±1%)
Hispanic or Latino	3,060 (±720)	9% (±2%)
<b>Language spoken (2018-2022)</b>		
Population (5 years and older)	29,574 (±1,826)	100% (±6%)
English only	15,938 (±1,130)	54% (±4%)
Language other than English	13,637 (±2,148)	46% (±7%)
Speak English less than "very well"	7,385 (±1,217)	25% (±4%)
<b>Disability status (2018-2022)</b>		
Total population for whom disability status is determined	32,098 (±1,950)	100% (±6%)
Population with a disability	4,522 (±564)	14% (±2%)
<b>Nativity (2018-2022)</b>		
Foreign born	9,057 (±1,088)	28% (±3%)
<b>Residence one year ago (2018-2022)</b>		
Population (1 year and older)	31,889 (±1,924)	100% (±6%)
Same residence	27,206 (±1,900)	85% (±6%)
Different residence in the U.S.	4,570 (±827)	14% (±3%)
Different residence outside the U.S.	suppressed	suppressed

## Quality of life

### Income and poverty

<b>Household income (2022 dollars) (2018-2022)</b>		
Total households	9,997 (±456)	100% (±5%)
Less than \$35,000	2,802 (±406)	28% (±4%)
\$35,000-\$49,999	1,199 (±247)	12% (±3%)
\$50,000-\$74,999	2,236 (±353)	22% (±4%)
\$75,000-\$99,999	1,088 (±198)	11% (±2%)
\$100,000 or more	2,672 (±338)	27% (±3%)
Median household income (2022 dollars)	suppressed	suppressed

<b>Poverty (2018-2022)</b>		
All people for whom poverty status is determined	31,831 (±1,953)	100% (±6%)
With income below poverty	7,714 (±1,467)	24% (±5%)
With income 100-149 of poverty	3,185 (±839)	10% (±3%)
With income 150-199 of poverty	2,989 (±786)	9% (±3%)
With income 200 of poverty or higher	17,943 (±1,558)	56% (±5%)
17 years and younger (percent of people under age 18)	3,630 (±685)	37% (±7%)
18-24 (percent of people age 18-24)	449 (±153)	16% (±6%)
25-34 (percent of people age 25-34)	938 (±215)	17% (±4%)
35-44 (percent of people age 35-44)	887 (±253)	21% (±6%)
45-54 (percent of people age 45-54)	655 (±207)	19% (±6%)
55-64 (percent of people age 55-64)	788 (±198)	25% (±6%)
18-64 (percent of people 18-64)	3,717 (±465)	19% (±2%)
65 years and older (percent of people age 65+)	366 (±114)	13% (±4%)

## Health coverage

<b>Health coverage (2018-2022)</b>	4,522 (±564)	14% (±2%)
Total population for whom health insurance coverage status is determined	32,098 (±1,950)	100% (±6%)
Total population age 65 and under for whom health insurance coverage status is determined	29,343 (±1,546)	91% (±5%)

## Housing

<b>Total housing units (2018-2022)</b>		
Total housing units	10,632 (±407)	100% (±4%)
<b>Owned and Rental Housing (2018-2022)</b>		
Vacant housing units	635 (±194)	6% (±2%)
Occupied housing units	9,997 (±456)	94% (±4%)
Average household size	3	100% (±2%)
Owner-occupied	5,897 (±426)	55% (±4%)
Average household size	3	100% (±3%)
Renter-occupied	4,099 (±380)	39% (±4%)
Average household size	3	100% (±4%)

<b>Year built (2018-2022)</b>		
2010 or later	251 (±113)	2% (±1%)
2000-2009	383 (±111)	4% (±1%)
1970-1999	2,002 (±344)	19% (±3%)
1940-1969	3,289 (±406)	31% (±4%)
1939 or earlier	4,708 (±366)	44% (±3%)
<b>Households (2018-2022)</b>		
Total households	9,997 (±456)	100% (±5%)
<b>Households by type (2018-2022)</b>		
Family households	6,615 (±441)	66% (±4%)
With children under 18 years	4,002 (±382)	40% (±4%)
Married-couple family households	3,481 (±354)	35% (±4%)
With children under 18 years.1	2,078 (±292)	21% (±3%)
Single-person family households	3,134 (±376)	31% (±4%)
With children under 18 years.2	1,923 (±310)	19% (±3%)
Nonfamily households	3,382 (±362)	34% (±4%)
Householder living alone	2,641 (±340)	26% (±3%)
65 years and over	728 (±172)	7% (±2%)
Households with one or more children under 18 years	4,041 (±384)	40% (±4%)
Households with one or more people 65 years and over	2,263 (±295)	23% (±3%)
<b>Year householder moved into unit (2018-2022)</b>		
Moved in 2010 or later	7,048 (±584)	71% (±6%)
Moved in 2000-2009	1,108 (±211)	11% (±2%)
Moved in 1990-1999	962 (±220)	10% (±2%)
Moved in 1989 or earlier	879 (±180)	9% (±2%)
<b>Cost-burdened households (2018-2022)</b>		
All households for which cost burden is calculated	9,739 (±469)	100% (±5%)
Cost-burdened households	3,710 (±460)	38% (±5%)
Owner households for which cost burden is calculated	5,847 (±430)	100% (±7%)
Cost-burdened owner households	1,353 (±257)	23% (±4%)
Renter households for which cost burden is calculated	3,892 (±392)	100% (±10%)
Cost-burdened renter households	2,357 (±382)	61% (±10%)



<b>Rent paid (2018-2022)</b>		
Households paying rent	4,029 (±376)	100% (±9%)
Median rent paid (2022 dollars)	1,162 (±494)	100% (±43%)
Transportation		
<b>Vehicles per household (2018-2022)</b>		
No vehicles	1,240 (±215)	12% (±2%)
1 vehicle available	3,606 (±427)	36% (±4%)
2 vehicles available	3,250 (±397)	33% (±4%)
3 or more vehicles available	1,900 (±286)	19% (±3%)

## Transportation

<b>Transportation to work (2018-2022)</b>		
Workers (16 years and older)	14,149 (±968)	100% (±7%)
Car, truck, or van (including passengers)	11,049 (±847)	78% (±6%)
Public transportation	832 (±301)	6% (±2%)
Walked, biked, worked at home, or other	2,269 (±416)	16% (±3%)
<b>Travel time to work (2018-2022)</b>		
Total workers age 16+ (not home based)	12,130 (±916)	100% (±8%)
Less than 10 minutes	853 (±250)	7% (±2%)
10-19 minutes	4,488 (±529)	37% (±4%)
20-29 minutes	3,167 (±419)	26% (±4%)
30 minutes or longer	3,623 (±474)	30% (±4%)

## Workforce

<b>Educational attainment (2018-2022)</b>		
Population (25 years and older)	19,512 (±1,122)	100% (±6%)
Less than high school	4,323 (±553)	22% (±3%)
High school diploma or GED	5,541 (±555)	28% (±3%)
Some college or associate's degree	5,334 (±569)	27% (±3%)
Bachelor's Degree	2,840 (±385)	15% (±2%)
Graduate or professional degree	1,473 (±269)	8% (±1%)
High school graduate or higher	15,189 (±923)	78% (±5%)
Bachelor's degree or higher	4,313 (±470)	22% (±2%)

<b>Working Adults (2018-2022)</b>		
Total civilian non-institutionalized population, age 18-64	19,263 (±1,125)	100% (±6%)
Working age adults who are employed	13,687 (±911)	71% (±5%)
Civilian labor force	14,466 (±945)	100% (±7%)
Unemployed	779 (±276)	5% (±2%)
<b>Total employed workers (LEHD) (2021)</b>		
Total employed workers	12615	100%
<b>Worker age (2021)</b>		
Age 29 or younger	3856	31%
Age 30 to 54	6889	55%
Age 55 or older	1871	15%
<b>Workers by earnings (2021)</b>		
\$15,000 per year or less	2579	20%
\$15,001 to \$39,999 per year	4583	36%
\$40,000 or more per year	5452	43%
<b>Workers by industry of employment (2021)</b>		
Accommodation and food services	851	7%
Administration & support, waste management, and remediation	925	7%
Agriculture, forestry, fishing and hunting	31	0%
Arts, entertainment, and recreation	127	1%
Construction	350	3%
Educational services	930	7%
Finance and insurance	577	5%
Health care and social assistance	3078	24%
Information	149	1%
Management of companies and enterprises	409	3%
Manufacturing	1641	13%
Mining, quarrying, and oil and gas extraction	suppressed	suppressed
Other services (excluding public administration)	424	3%
Professional, scientific, and technical services	552	4%
Public administration	479	4%
Real estate and rental and leasing	128	1%
Retail trade	1184	9%
Transportation and warehousing	349	3%
Utilities	19	0%
Wholesale trade	411	3%

<b>Workers by race (2021)</b>		
White alone	5918	47%
Black or African American alone	2012	16%
American Indian or Alaska Native alone	152	1%
Asian alone	4126	33%
Native Hawaiian or Other Pacific Islander alone	22	0%
Two or more race groups	385	3%
Hispanic or Latino (of any race)	1142	9%
<b>Workers by educational attainment (2021)</b>		
Less than high school	1239	10%
High school or equivalent, no college	2145	17%
Some college or associate degree	2671	21%
Bachelor's degree or advanced degree	2705	21%

Source:

2018-2022 American Community Survey 5-year estimates, adjusted to fit current neighborhood boundaries using the 2020 Census counts. The 5-year estimates represent averages of data collected over that time period.

2021 Minnesota Department of Employment and Economic Development, Quarterly Census of Employment and Wages.



**SAINT PAUL**  
MINNESOTA



**Minnesota**  
Compass

## Community Profiles

Summit-University Neighborhood, Saint Paul, Minnesota



### Summit-University

<b>Total population</b>	18,293 ( $\pm 1,045$ )	100% ( $\pm 6\%$ )
<b>Sex (2018-2022)</b>		
Male	8,994 ( $\pm 711$ )	49% ( $\pm 4\%$ )
Female	9,299 ( $\pm 623$ )	51% ( $\pm 3\%$ )
<b>Age (2018-2022)</b>		
Under 5 years	1,190 ( $\pm 235$ )	7% ( $\pm 1\%$ )
5-9 years	671 ( $\pm 151$ )	4% ( $\pm 1\%$ )
10-14 years	1,224 ( $\pm 257$ )	7% ( $\pm 1\%$ )
15-17 years	787 ( $\pm 200$ )	4% ( $\pm 1\%$ )
18-24 years	1,804 ( $\pm 321$ )	10% ( $\pm 2\%$ )
25-34 years	3,789 ( $\pm 414$ )	21% ( $\pm 2\%$ )
35-44 years	2,459 ( $\pm 308$ )	13% ( $\pm 2\%$ )
45-54 years	1,981 ( $\pm 328$ )	11% ( $\pm 2\%$ )
55-64 years	1,934 ( $\pm 284$ )	11% ( $\pm 2\%$ )
65-74 years	1,677 ( $\pm 298$ )	9% ( $\pm 2\%$ )
75-84 years	609 ( $\pm 186$ )	3% ( $\pm 1\%$ )
85 years and older	167 ( $\pm 70$ )	1% ( $\pm 0\%$ )

<b>Race &amp; Ethnicity (2018-2022)</b>		
White	9,001 (±613)	49% (±3%)
Of Color	9,100 (±1,216)	50% (±7%)
Black or African American	6,313 (±881)	35% (±5%)
American Indian and Alaska Native	suppressed	suppressed
Asian	989 (±252)	5% (±1%)
Native Hawaiian and Other Pacific Islander	suppressed	suppressed
Other race	suppressed	suppressed
Two or more races	1,110 (±362)	6% (±2%)
Hispanic or Latino	628 (±222)	3% (±1%)
<b>Language spoken (2018-2022)</b>		
Population (5 years and older)	17,103 (±985)	100% (±6%)
English only	13,072 (±855)	76% (±5%)
Language other than English	4,031 (±1,304)	24% (±8%)
Speak English less than "very well"	1,775 (±377)	10% (±2%)
<b>Disability status (2018-2022)</b>		
Total population for whom disability status is determined	18,039 (±1,045)	100% (±6%)
Population with a disability	2,179 (±313)	12% (±2%)
<b>Nativity (2018-2022)</b>		
Foreign born	2,566 (±432)	14% (±2%)
<b>Residence one year ago (2018-2022)</b>		
Population (1 year and older)	18,087 (±1,044)	100% (±6%)
Same residence	14,721 (±985)	81% (±5%)
Different residence in the U.S.	3,287 (±569)	18% (±3%)
Different residence outside the U.S.	suppressed	suppressed

## Quality of life

### Income and poverty

<b>Household income (2022 dollars) (2018-2022)</b>		
Total households	8,248 (±448)	100% (±5%)
Less than \$35,000	2,356 (±329)	29% (±4%)
\$35,000-\$49,999	1,126 (±256)	14% (±3%)
\$50,000-\$74,999	1,257 (±249)	15% (±3%)
\$75,000-\$99,999	808 (±159)	10% (±2%)
\$100,000 or more	2,700 (±315)	33% (±4%)
Median household income (2022 dollars)	\$65,362 (±\$44,352)	100% (±68%)

<b>Poverty (2018-2022)</b>		
All people for whom poverty status is determined	18,034 (±1,045)	100% (±6%)
With income below poverty	3,294 (±636)	18% (±4%)
With income 100-149 of poverty	1,941 (±464)	11% (±3%)
With income 150-199 of poverty	1,352 (±406)	8% (±2%)
With income 200 of poverty or higher	11,447 (±936)	64% (±5%)
17 years and younger (percent of people under age 18)	1,188 (±289)	31% (±8%)
18-24 (percent of people age 18-24)	334 (±129)	19% (±7%)
25-34 (percent of people age 25-34)	426 (±130)	11% (±3%)
35-44 (percent of people age 35-44)	432 (±124)	18% (±5%)
45-54 (percent of people age 45-54)	305 (±121)	16% (±6%)
55-64 (percent of people age 55-64)	328 (±97)	17% (±5%)
18-64 (percent of people 18-64)	1,825 (±271)	15% (±2%)
65 years and older (percent of people age 65+)	280 (±93)	12% (±4%)

## Health coverage

<b>Health coverage (2018-2022)</b>	2,179 (±313)	12% (±2%)
Total population for whom health insurance coverage status is determined	18,039 (±1,045)	100% (±6%)
Total population age 65 and under for whom health insurance coverage status is determined	15,742 (±885)	87% (±5%)

## Housing

<b>Total housing units (2018-2022)</b>		
Total housing units	8,808 (±418)	100% (±5%)
<b>Owned and Rental Housing (2018-2022)</b>		
Vacant housing units	561 (±172)	6% (±2%)
Occupied housing units	8,248 (±448)	94% (±5%)
Average household size	2	100% (±4%)
Owner-occupied	3,443 (±325)	39% (±4%)
Average household size	2	100% (±8%)
Renter-occupied	4,805 (±390)	55% (±4%)
Average household size	2	100% (±5%)

<b>Year built (2018-2022)</b>		
2010 or later	250 (±118)	3% (±1%)
2000-2009	434 (±140)	5% (±2%)
1970-1999	1,468 (±237)	17% (±3%)
1940-1969	1,928 (±317)	22% (±4%)
1939 or earlier	4,728 (±333)	54% (±4%)
<b>Households (2018-2022)</b>		
Total households	8,248 (±448)	100% (±5%)
<b>Households by type (2018-2022)</b>		
Family households	3,502 (±309)	42% (±4%)
With children under 18 years	1,754 (±208)	21% (±3%)
Married-couple family households	2,134 (±261)	26% (±3%)
With children under 18 years.1	969 (±176)	12% (±2%)
Single-person family households	1,367 (±247)	17% (±3%)
With children under 18 years.2	785 (±165)	10% (±2%)
Nonfamily households	4,746 (±407)	58% (±5%)
Householder living alone	3,728 (±391)	45% (±5%)
65 years and over	970 (±205)	12% (±2%)
Households with one or more children under 18 years	1,754 (±208)	21% (±3%)
Households with one or more people 65 years and over	1,873 (±232)	23% (±3%)
<b>Year householder moved into unit (2018-2022)</b>		
Moved in 2010 or later	5,760 (±479)	70% (±6%)
Moved in 2000-2009	1,170 (±204)	14% (±3%)
Moved in 1990-1999	635 (±159)	8% (±2%)
Moved in 1989 or earlier	683 (±200)	8% (±2%)
<b>Cost-burdened households (2018-2022)</b>		
All households for which cost burden is calculated	7,861 (±473)	100% (±6%)
Cost-burdened households	2,503 (±318)	32% (±4%)
Owner households for which cost burden is calculated	3,435 (±326)	100% (±10%)
Cost-burdened owner households	745 (±172)	22% (±5%)
Renter households for which cost burden is calculated	4,426 (±417)	100% (±9%)
Cost-burdened renter households	1,758 (±267)	40% (±6%)



<b>Rent paid (2018-2022)</b>		
Households paying rent	4,582 (±377)	100% (±8%)
Median rent paid (2022 dollars)	1,081 (±517)	100% (±48%)
Transportation		
<b>Vehicles per household (2018-2022)</b>		
No vehicles	1,591 (±305)	19% (±4%)
1 vehicle available	3,392 (±357)	41% (±4%)
2 vehicles available	2,624 (±308)	32% (±4%)
3 or more vehicles available	641 (±146)	8% (±2%)

## Transportation

<b>Transportation to work (2018-2022)</b>		
Workers (16 years and older)	9,902 (±716)	100% (±7%)
Car, truck, or van (including passengers)	6,404 (±562)	65% (±6%)
Public transportation	1,052 (±261)	11% (±3%)
Walked, biked, worked at home, or other	2,446 (±349)	25% (±4%)
<b>Travel time to work (2018-2022)</b>		
Total workers age 16+ (not home based)	8,103 (±650)	100% (±8%)
Less than 10 minutes	777 (±179)	10% (±2%)
10-19 minutes	3,223 (±398)	40% (±5%)
20-29 minutes	1,918 (±358)	24% (±4%)
30 minutes or longer	2,185 (±318)	27% (±4%)

## Workforce

<b>Educational attainment (2018-2022)</b>		
Population (25 years and older)	12,617 (±687)	100% (±5%)
Less than high school	1,295 (±235)	10% (±2%)
High school diploma or GED	2,158 (±305)	17% (±2%)
Some college or associate's degree	2,827 (±395)	22% (±3%)
Bachelor's Degree	3,702 (±405)	29% (±3%)
Graduate or professional degree	2,635 (±305)	21% (±2%)
High school graduate or higher	11,322 (±711)	90% (±6%)
Bachelor's degree or higher	6,337 (±507)	50% (±4%)

<b>Working Adults (2018-2022)</b>		
Total civilian non-institutionalized population, age 18-64	11,877 (±729)	100% (±6%)
Working age adults who are employed	9,456 (±677)	80% (±6%)
Civilian labor force	9,889 (±691)	100% (±7%)
Unemployed	433 (±134)	4% (±1%)
<b>Total employed workers (LEHD) (2021)</b>		
Total employed workers	7568	100%
<b>Worker age (2021)</b>		
Age 29 or younger	2115	28%
Age 30 to 54	4081	54%
Age 55 or older	1372	18%
<b>Workers by earnings (2021)</b>		
\$15,000 per year or less	1552	21%
\$15,001 to \$39,999 per year	2121	28%
\$40,000 or more per year	3896	52%
<b>Workers by industry of employment (2021)</b>		
Accommodation and food services	492	7%
Administration & support, waste management, and remediation	457	6%
Agriculture, forestry, fishing and hunting	16	0%
Arts, entertainment, and recreation	140	2%
Construction	202	3%
Educational services	845	11%
Finance and insurance	421	6%
Health care and social assistance	1701	23%
Information	165	2%
Management of companies and enterprises	310	4%
Manufacturing	456	6%
Mining, quarrying, and oil and gas extraction	suppressed	suppressed
Other services (excluding public administration)	271	4%
Professional, scientific, and technical services	529	7%
Public administration	399	5%
Real estate and rental and leasing	103	1%
Retail trade	618	8%
Transportation and warehousing	213	3%
Utilities	suppressed	suppressed
Wholesale trade	221	3%

<b>Workers by race (2021)</b>		
White alone	4868	64%
Black or African American alone	1818	24%
American Indian or Alaska Native alone	52	1%
Asian alone	588	8%
Native Hawaiian or Other Pacific Islander alone	suppressed	suppressed
Two or more race groups	237	3%
Hispanic or Latino (of any race)	371	5%
<b>Workers by educational attainment (2021)</b>		
Less than high school	582	8%
High school or equivalent, no college	1219	16%
Some college or associate degree	1764	23%
Bachelor's degree or advanced degree	1890	25%

Source:

2018-2022 American Community Survey 5-year estimates, adjusted to fit current neighborhood boundaries using the 2020 Census counts. The 5-year estimates represent averages of data collected over that time period.

2021 Minnesota Department of Employment and Economic Development, Quarterly Census of Employment and Wages.



**SAINT PAUL**  
MINNESOTA



**Minnesota**  
Compass

## Community Profiles

West Side Neighborhood, Saint Paul, Minnesota



### West Side

<b>Total population</b>	15,316 ( $\pm 1,011$ )	100% ( $\pm 7\%$ )
<b>Sex (2018-2022)</b>		
Male	7,660 ( $\pm 640$ )	50% ( $\pm 4\%$ )
Female	7,656 ( $\pm 635$ )	50% ( $\pm 4\%$ )
<b>Age (2018-2022)</b>		
Under 5 years	1,011 ( $\pm 224$ )	7% ( $\pm 1\%$ )
5-9 years	1,253 ( $\pm 259$ )	8% ( $\pm 2\%$ )
10-14 years	1,204 ( $\pm 233$ )	8% ( $\pm 2\%$ )
15-17 years	892 ( $\pm 208$ )	6% ( $\pm 1\%$ )
18-24 years	973 ( $\pm 232$ )	6% ( $\pm 2\%$ )
25-34 years	2,646 ( $\pm 455$ )	17% ( $\pm 3\%$ )
35-44 years	2,182 ( $\pm 343$ )	14% ( $\pm 2\%$ )
45-54 years	1,741 ( $\pm 269$ )	11% ( $\pm 2\%$ )
55-64 years	1,941 ( $\pm 381$ )	13% ( $\pm 2\%$ )
65-74 years	874 ( $\pm 169$ )	6% ( $\pm 1\%$ )
75-84 years	375 ( $\pm 188$ )	2% ( $\pm 1\%$ )
85 years and older	224 ( $\pm 106$ )	1% ( $\pm 1\%$ )

<b>Race &amp; Ethnicity (2018-2022)</b>		
White	7,163 (±751)	47% (±5%)
Of Color	6,642 (±1,315)	43% (±9%)
Black or African American	1,751 (±568)	11% (±4%)
American Indian and Alaska Native	suppressed	suppressed
Asian	1,109 (±420)	7% (±3%)
Native Hawaiian and Other Pacific Islander	suppressed	suppressed
Other race	suppressed	suppressed
Two or more races	1,072 (±391)	7% (±3%)
Hispanic or Latino	3,992 (±658)	26% (±4%)
<b>Language spoken (2018-2022)</b>		
Population (5 years and older)	14,305 (±982)	100% (±7%)
English only	10,126 (±876)	71% (±6%)
Language other than English	4,179 (±1,316)	29% (±9%)
Speak English less than "very well"	1,300 (±412)	9% (±3%)
<b>Disability status (2018-2022)</b>		
Total population for whom disability status is determined	15,141 (±1,011)	100% (±7%)
Population with a disability	2,005 (±405)	13% (±3%)
<b>Nativity (2018-2022)</b>		
Foreign born	2,502 (±498)	16% (±3%)
<b>Residence one year ago (2018-2022)</b>		
Population (1 year and older)	15,188 (±1,008)	100% (±7%)
Same residence	13,203 (±912)	87% (±6%)
Different residence in the U.S.	1,972 (±456)	13% (±3%)
Different residence outside the U.S.	suppressed	suppressed

## Quality of life

### Income and poverty

<b>Household income (2022 dollars) (2018-2022)</b>		
Total households	5,731 (±376)	100% (±7%)
Less than \$35,000	1,464 (±322)	26% (±6%)
\$35,000-\$49,999	497 (±159)	9% (±3%)
\$50,000-\$74,999	956 (±232)	17% (±4%)
\$75,000-\$99,999	706 (±169)	12% (±3%)
\$100,000 or more	2,108 (±369)	37% (±6%)
Median household income (2022 dollars)	\$70,976 (±\$33,569)	100% (±47%)

<b>Poverty (2018-2022)</b>		
All people for whom poverty status is determined	15,113 (±1,010)	100% (±7%)
With income below poverty	2,673 (±707)	18% (±5%)
With income 100-149 of poverty	1,621 (±594)	11% (±4%)
With income 150-199 of poverty	1,155 (±420)	8% (±3%)
With income 200 of poverty or higher	9,664 (±916)	64% (±6%)
17 years and younger (percent of people under age 18)	1,305 (±306)	30% (±7%)
18-24 (percent of people age 18-24)	177 (±86)	18% (±9%)
25-34 (percent of people age 25-34)	436 (±151)	17% (±6%)
35-44 (percent of people age 35-44)	280 (±129)	13% (±6%)
45-54 (percent of people age 45-54)	160 (±82)	9% (±5%)
55-64 (percent of people age 55-64)	198 (±122)	10% (±6%)
18-64 (percent of people 18-64)	1,251 (±264)	13% (±3%)
65 years and older (percent of people age 65+)	117 (±67)	9% (±5%)

## Health coverage

<b>Health coverage (2018-2022)</b>	2,005 (±405)	13% (±3%)
Total population for whom health insurance coverage status is determined	15,141 (±1,011)	100% (±7%)
Total population age 65 and under for whom health insurance coverage status is determined	13,806 (±942)	91% (±6%)

## Housing

<b>Total housing units (2018-2022)</b>		
Total housing units	6,060 (±364)	100% (±6%)
<b>Owned and Rental Housing (2018-2022)</b>		
Vacant housing units	329 (±163)	5% (±3%)
Occupied housing units	5,731 (±376)	95% (±6%)
Average household size	3	100% (±2%)
Owner-occupied	3,392 (±354)	56% (±6%)
Average household size	3	100% (±3%)
Renter-occupied	2,339 (±301)	39% (±5%)
Average household size	3	100% (±3%)

<b>Year built (2018-2022)</b>		
2010 or later	149 (±67)	2% (±1%)
2000-2009	278 (±120)	5% (±2%)
1970-1999	1,113 (±270)	18% (±4%)
1940-1969	1,378 (±295)	23% (±5%)
1939 or earlier	3,142 (±362)	52% (±6%)
<b>Households (2018-2022)</b>		
Total households	5,731 (±376)	100% (±7%)
<b>Households by type (2018-2022)</b>		
Family households	3,382 (±293)	59% (±5%)
With children under 18 years	2,002 (±246)	35% (±4%)
Married-couple family households	2,218 (±259)	39% (±5%)
With children under 18 years.1	1,002 (±203)	17% (±4%)
Single-person family households	1,164 (±238)	20% (±4%)
With children under 18 years.2	1,000 (±218)	17% (±4%)
Nonfamily households	2,349 (±385)	41% (±7%)
Householder living alone	1,820 (±344)	32% (±6%)
65 years and over	553 (±212)	10% (±4%)
Households with one or more children under 18 years	2,030 (±247)	35% (±4%)
Households with one or more people 65 years and over	1,092 (±211)	19% (±4%)
<b>Year householder moved into unit (2018-2022)</b>		
Moved in 2010 or later	3,415 (±443)	60% (±8%)
Moved in 2000-2009	954 (±190)	17% (±3%)
Moved in 1990-1999	743 (±189)	13% (±3%)
Moved in 1989 or earlier	619 (±196)	1080% (±0%)
<b>Cost-burdened households (2018-2022)</b>		
All households for which cost burden is calculated	5,623 (±385)	100% (±7%)
Cost-burdened households	1,766 (±328)	31% (±6%)
Owner households for which cost burden is calculated	3,383 (±355)	100% (±11%)
Cost-burdened owner households	561 (±164)	17% (±5%)
Renter households for which cost burden is calculated	2,240 (±312)	100% (±14%)
Cost-burdened renter households	1,205 (±285)	54% (±13%)



<b>Rent paid (2018-2022)</b>		
Households paying rent	2,297 (±307)	100% (±13%)
Median rent paid (2022 dollars)	1,141 (±500)	100% (±44%)
Transportation		
<b>Vehicles per household (2018-2022)</b>		
No vehicles	653 (±206)	11% (±4%)
1 vehicle available	2,056 (±368)	36% (±6%)
2 vehicles available	2,004 (±278)	35% (±5%)
3 or more vehicles available	1,018 (±251)	18% (±4%)

## Transportation

<b>Transportation to work (2018-2022)</b>		
Workers (16 years and older)	7,789 (±691)	100% (±9%)
Car, truck, or van (including passengers)	6,054 (±629)	78% (±8%)
Public transportation	388 (±132)	5% (±2%)
Walked, biked, worked at home, or other	1,347 (±328)	17% (±4%)
<b>Travel time to work (2018-2022)</b>		
Total workers age 16+ (not home based)	6,820 (±654)	100% (±10%)
Less than 10 minutes	818 (±298)	12% (±4%)
10-19 minutes	2,109 (±386)	31% (±6%)
20-29 minutes	1,940 (±319)	28% (±5%)
30 minutes or longer	1,953 (±375)	29% (±6%)

## Workforce

<b>Educational attainment (2018-2022)</b>		
Population (25 years and older)	9,983 (±752)	100% (±8%)
Less than high school	1,296 (±292)	13% (±3%)
High school diploma or GED	2,252 (±397)	23% (±4%)
Some college or associate's degree	2,996 (±460)	30% (±5%)
Bachelor's Degree	2,414 (±356)	24% (±4%)
Graduate or professional degree	1,025 (±191)	10% (±2%)
High school graduate or higher	8,687 (±730)	87% (±7%)
Bachelor's degree or higher	3,439 (±405)	34% (±4%)

<b>Working Adults (2018-2022)</b>		
Total civilian non-institutionalized population, age 18-64	9,449 (±787)	100% (±8%)
Working age adults who are employed	7,370 (±671)	78% (±7%)
Civilian labor force	7,739 (±667)	100% (±9%)
Unemployed	369 (±139)	5% (±2%)
<b>Total employed workers (LEHD) (2021)</b>		
Total employed workers	6176	100%
<b>Worker age (2021)</b>		
Age 29 or younger	1638	27%
Age 30 to 54	3321	54%
Age 55 or older	1217	20%
<b>Workers by earnings (2021)</b>		
\$15,000 per year or less	1230	20%
\$15,001 to \$39,999 per year	1818	29%
\$40,000 or more per year	3128	51%
<b>Workers by industry of employment (2021)</b>		
Accommodation and food services	489	8%
Administration & support, waste management, and remediation	412	7%
Agriculture, forestry, fishing and hunting	23	0%
Arts, entertainment, and recreation	92	2%
Construction	215	4%
Educational services	572	9%
Finance and insurance	333	5%
Health care and social assistance	1195	19%
Information	99	2%
Management of companies and enterprises	221	4%
Manufacturing	536	9%
Mining, quarrying, and oil and gas extraction	suppressed	suppressed
Other services (excluding public administration)	220	4%
Professional, scientific, and technical services	332	5%
Public administration	304	5%
Real estate and rental and leasing	80	1%
Retail trade	647	11%
Transportation and warehousing	167	3%
Utilities	14	0%
Wholesale trade	224	4%

<b>Workers by race (2021)</b>		
White alone	4650	75%
Black or African American alone	785	13%
American Indian or Alaska Native alone	106	2%
Asian alone	401	7%
Native Hawaiian or Other Pacific Islander alone	suppressed	0%
Two or more race groups	231	4%
Hispanic or Latino (of any race)	1132	18%
<b>Workers by educational attainment (2021)</b>		
Less than high school	616	10%
High school or equivalent, no college	1067	17%
Some college or associate degree	1416	23%
Bachelor's degree or advanced degree	1439	23%

Source:

2018-2022 American Community Survey 5-year estimates, adjusted to fit current neighborhood boundaries using the 2020 Census counts. The 5-year estimates represent averages of data collected over that time period.

2021 Minnesota Department of Employment and Economic Development, Quarterly Census of Employment and Wages.

## Acknowledgments

Thank you to all of the community members who participated in engagement activities and who provided feedback during the CARP update process. We would also like to thank the CARP Update Advisory Committee for their input and engagement.

Thank you to Renewing the Countryside and Urban Farm and Garden Alliance for their partnership.

Thank you to the Wilder Research staff who contributed to this work:

Anna Alba  
Kyla Goux  
Briellen Griffin  
Anne Li  
Ananya Matewos  
Maureen McGovern  
Jacqueline Zhang

Wilder Research, a division of Amherst H. Wilder Foundation, is a nationally respected nonprofit research and evaluation group. For more than 100 years, Wilder Research has gathered and interpreted facts and trends to help families and communities thrive, get at the core of community concerns, and uncover issues that are overlooked or poorly understood.

451 Lexington Parkway North  
Saint Paul, Minnesota 55104  
651-280-2700 | [www.wilderresearch.org](http://www.wilderresearch.org)

**Wilder Research®**

Information. Insight. Impact.



**SAINT PAUL**  
**MINNESOTA**