

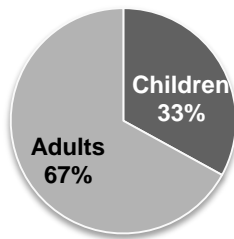


At a glance

About the neighborhood

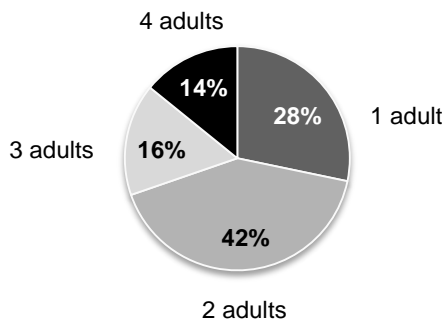
Population

Total population in the Promise Neighborhood	22,241
Total number of children age 17 or younger	7,249



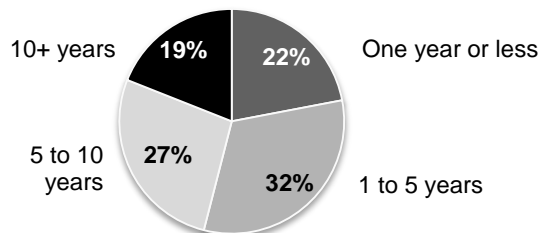
Source: 2010 Census

Adults in households with children



Source: Saint Paul Promise Neighborhood Community Assessment

Length of time at current residence: Households with children



Source: Saint Paul Promise Neighborhood Community Assessment

Homeownership for households with children

Own	40%
Rent	60%

Annual income of households with children

Less than \$18,000	45%
\$18,000 to less than \$36,000	36%
More than \$36,000	19%

MFIP cash assistance

Received in the past month	29%
----------------------------	-----

Source: Saint Paul Promise Neighborhood Community Assessment

Home language: Households with children	Promise Neighborhood	Saint Paul Public Schools
English	64%	55%
Hmong	22%	23%
Somali	4%	2%
Spanish	2%	11%
Other	7%	9%

Sources: Saint Paul Promise Neighborhood Community Assessment, Saint Paul Public Schools, 2010

WHAT PEOPLE SAID...

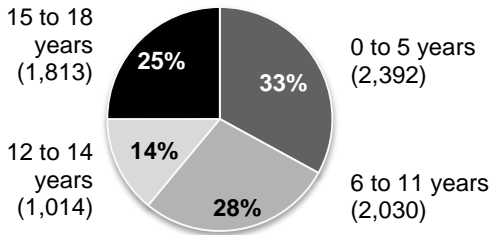
Greatest concerns for neighborhood and community

- Safety
- Crime/violence
- Drugs

Source: Saint Paul Promise Neighborhood Community Assessment

About the children living in the Saint Paul Promise Neighborhood

Age



Sources: 2010 Census

Race and ethnicity	Promise Neighborhood	Saint Paul Public Schools	Saint Paul
African American	33%	30%	16%
African Native	9%		
Asian (including SE Asian)	31%	30%	15%
Hispanic/Latino	10%	14%	10%
White	9%	24%	60%
Multi-Racial/Other*	8%	2%	9%

*To preserve confidentiality in reporting, American Indians have been included in the Multi-racial/Other category

Sources: Saint Paul Promise Neighborhood Community Assessment, Saint Paul Public Schools 2010, 2010 Census.

Schools attended by Saint Paul Promise Neighborhood children

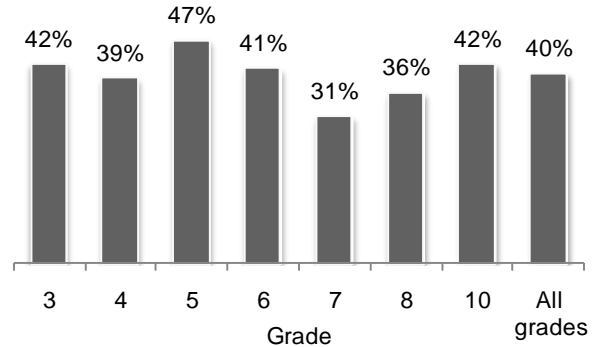
Attending Maxfield or Jackson	5%
Attending another school in the PN	4%
Attending school outside PN	69%
Not in school (under age 5)	22%

Source: Saint Paul Promise Neighborhood Community Assessment, 2010 Census

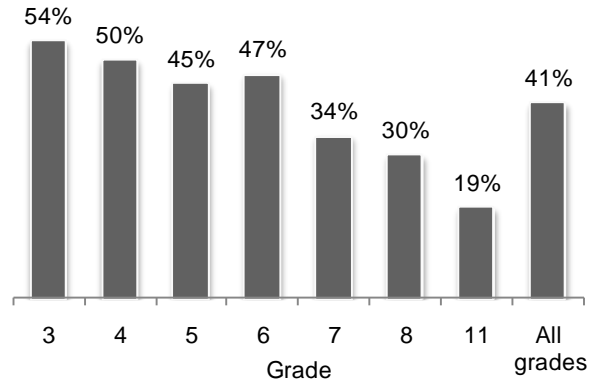
Students receiving special education services	Promise Neighborhood	Saint Paul Public Schools
Enrolled	22%	19%

Sources: Saint Paul Promise Neighborhood Community Assessment, Saint Paul Public Schools 2010

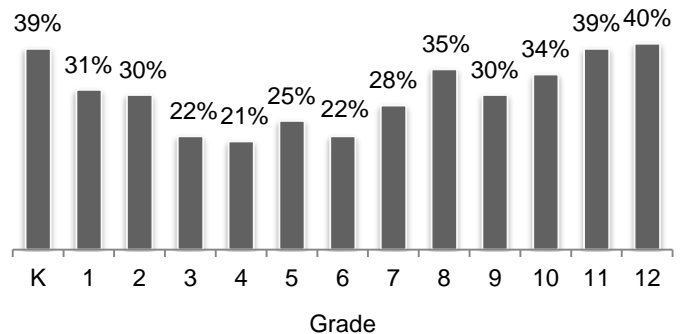
Promise Neighborhood students in Saint Paul Public Schools who meet or exceed state reading standards



Promise Neighborhood students in Saint Paul Public Schools who meet or exceed state math standards



Promise Neighborhood students in Saint Paul Public Schools absent 11 or more days



Source: Saint Paul Public Schools 2010

Caregiver feels student is not safe either at school and/or traveling to and from school

5 years	5%
6 to 11 years	14%
12 to 14 years	19%
15 to 18 years	27%
All age groups	19%

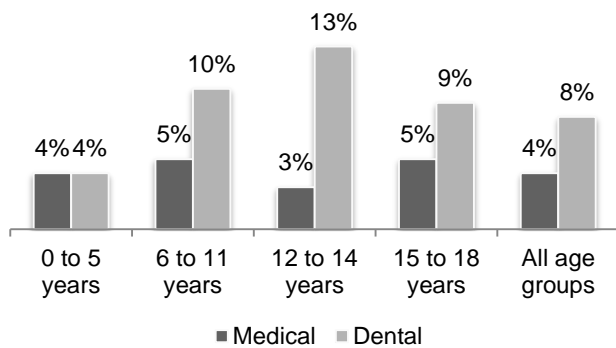
Source: Saint Paul Promise Neighborhood Community Assessment

Child exercises 60+ minutes and eats at least 5 servings of fruits or vegetables per day

5 years	16%
6 to 11 years	8%
12 to 14 years	7%
15 to 18 years	9%
All age groups	9%

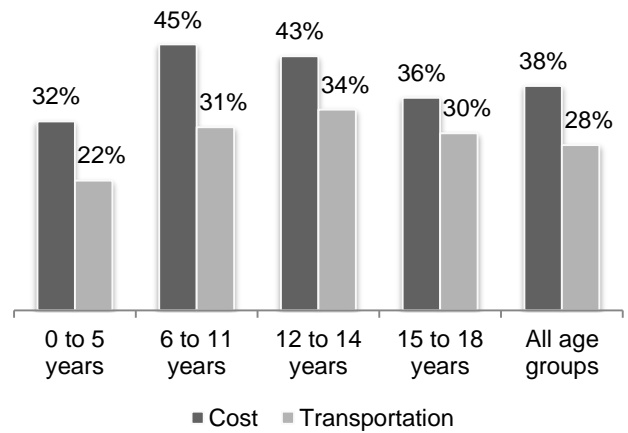
Source: Saint Paul Promise Neighborhood Community Assessment

Child needed medical or dental care but could not get it



Source: Saint Paul Promise Neighborhood Community Assessment

Child could not enroll in school-related activities or out-of-school programs because of cost or transportation



Source: Saint Paul Promise Neighborhood Community Assessment

WHAT PEOPLE SAID...

Top 3 resources or supports most helpful for success of child in school

- Rondo Library
- Faith-based programs or participation
- School (unspecified)

Source: Promise Neighborhood Community Assessment

Top 3 barriers to participation in school-related activities

- Transportation
- Time conflicts
- Cost of participation

Source: Promise Neighborhood Community Assessment



About their families

Primary caregiver	Promise Neighborhood	State of Minnesota
Biological, step, or adoptive parent	87%	97%
Grandparent	8%	1%
Someone else (relative, foster parent, etc.)	5%	2%

Sources: Saint Paul Promise Neighborhood Community Assessment, Child Care 2009 study

Education level of caregivers

Eighth grade or lower	15%
Some high school	8%
High school graduate or GED	22%
Some college (including technical school and 2 year or less degree)	35%
Bachelor's degree or higher	19%

Source: Saint Paul Promise Neighborhood Community Assessment

Marital status of caregivers

Married or living with partner	53%
Single, never married	32%
Widowed, Separated, or Divorced	15%

Source: Saint Paul Promise Neighborhood Community Assessment

Employment status of caregivers (in the past week)*

Working for pay at a job	49%
Looking for a job	23%
In school	19%
Retired	5%
Full time keeping house	37%
Unable to work due to disability	18%

*Total percent exceeds 100% due to respondent experiencing more than one type of employment status

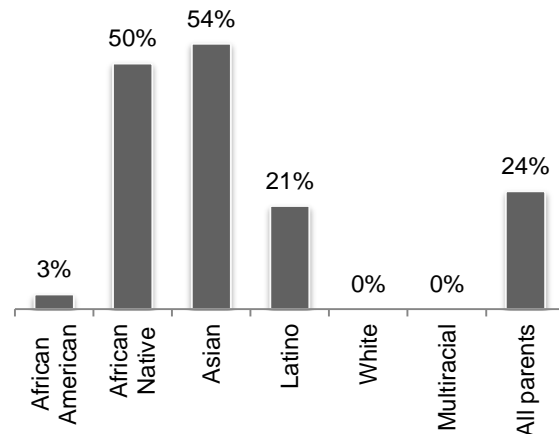
Source: Saint Paul Promise Neighborhood Community Assessment

Caregiver had trouble finding or maintaining a job due to child care problems

Had trouble	26%
-------------	-----

Source: Saint Paul Promise Neighborhood Community Assessment

Caregiver needs help to learn English (by race/ethnicity)



Source: Saint Paul Promise Neighborhood Community Assessment

For more information visit www.saintpaulpromiseneighborhood.org.
MAY 2011

The Promise Neighborhood planning year is supported by a federal grant from the United States Department of Education.